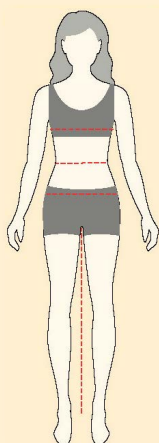


CARHARTT WOMEN'S SIZE CHART BODY MEASUREMENTS

	Suggested Size	X-Small	Small		Medium		Large		X-Large	
		2	4	6	8	10	12	14	16	18
Bust	Inches	33	34	35	36	37	38.5	40	41.5	43.5
	CM	84	86	89	91	94	98	102	105	110
Natural Waist	Inches	27	28	29	30	31	32.5	34	35.5	38
	CM	69	71	74	76	79	83	86	90	97
Hip (Seat)	Inches	36	37	38	39	40	41.5	43	44.5	46.5
	CM	91	94	97	99	102	105	109	113	118

- For Outerwear, Bibs, and Tops: If you prefer a slimmer fit or are between sizes, try sizing down.
- For Bottoms: If your measurement falls between sizes, buy the larger size.

HOW TO MEASURE



Bust:

Measure the fullest part of your bust, keeping the measuring tape parallel to the floor.

Natural Waist:

Bend side to side and find the natural bend in your body; this is your natural waist. Note: It may not be the smallest point.

Hips:

Measure the fullest part of your hips, approximately 8" below the natural waist.

Inseam:

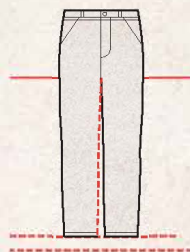
Measure from your crotch down to the desired length on body. You may also measure pants that you currently own and like. Lay the garment flat and smooth out. To get the inseam length, measure on the front from the crotch point, along the seam, to the hem.

For best results, measure over your undergarments.

WOMEN'S SOCK CONVERSION CHART

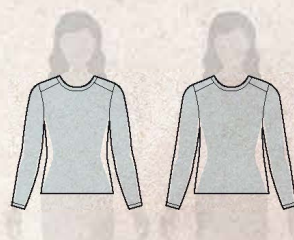
SHOE SIZE			SUGGESTED SIZE
US	EUROPE	UK	
3.5 - 5	35 - 37	2.5 - 4	SMALL
5.5 - 11.5	38 - 41	5 - 7.5	MEDIUM
9 - 12	42	8	LARGE

PANTS INSEAM LENGTH CHART



Regular
Inseam Measurement: 31" - 32"

WOMEN'S TOPS FIT



Relaxed Fit	Loose Fit
Slightly loose for a comfortable fit	Roomy for a comfortable fit
Subtle shape for range of motion	Allows for maximum range of movement

WOMEN'S PANTS FIT

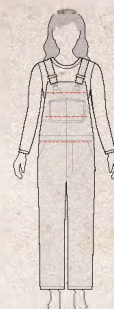


Fitted	Loose Fit
Mid-rise sits just below the waist	Mid-rise sits just below the waist
Closest fit through hip and thigh	Easy fit through the hip and thigh
Close to the body, but never too tight for work	A classic look you can wear anywhere and everywhere

BIB OVERALL (UNLINED)

STYLE #: 102438

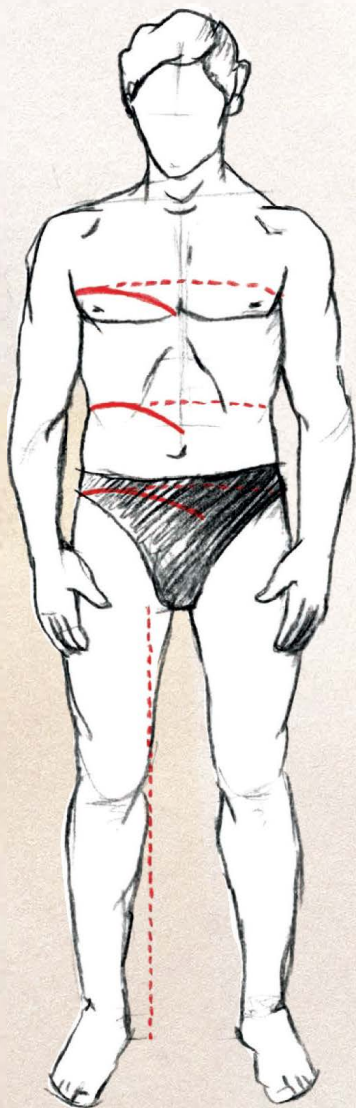
- Size to the largest part of your body
- Reference the inseam length chart and body measurement chart for guidance
- Measurements assume bib overall is worn with a shirt and undergarments. If you plan to layer over pants, you may need to size up.



CARHARTT MEN'S SIZE CHART

BODY MEASUREMENTS

Measure your body and order correct size



HOW TO MEASURE

For best results, measure over your undergarments.

Chest

Measure fullest part of your chest, keeping the tape level to the floor.

Waist

Measure your natural waist where your torso is the smallest.

Hips

Stand with heels together and measure the fullest part of your hips (approximately 8" below the natural waist).

Inseam

Measure pants that fit you well. Lay them flat, with the front and back creased smooth. Measure along the inseam from crotch to bottom of leg hem. Or, if you don't have pants that fit comfortably, measure from your crotch to your desired pants length.

MEN'S SOCK CONVERSION CHART

SHOE SIZE			SUGGESTED SIZE
US	EUROPE	UK	
5.5	38	5	5-8.5 (MEDIUM)
6	38,5	5.5	
6.5	39	6	
7	40	6	
7.5	40,5	6.5	
8	41	7	
8.5	42	7.5	9-11.5 (LARGE)
9	42,5	8	
9.5	43	8.5	
10	44	9	
10.5	44,5	9.5	
11	45	10	
11.5	45,5	10.5	12-15 (XL)
12	46	11	
13	47,5	12	
14	48,5	13	
15	49,5	14	

FLEX FIT HATS

HEAD MEASUREMENT (CIRCUMFERENCE)	SUGGESTED SIZE:	M/L	L/XL
	INCHES	22 - 22¾	23¼ - 23¾
	CM	56 - 58	59 - 60,5

NOTE: If your measurement falls between sizes, buy the larger size.

BASE LAYER BOTTOMS

SUGGESTED SIZE:		S	M	L	XL	2XL
WAIST	INCHES	28-30	31-34	35-38	39-42	43-46
	CM	71-76	78-86	89-97	99-107	109-117

NOTE: If your measurement falls between sizes, buy the larger size.

FOOTWEAR CONVERSION CHART

EUROPE	35	36	37	38	39	40	41	42	43	44	45	46	47	48
UK	2.5	3.5	4	5	5.5	6.5	7.5	8	9	9.5	10.5	11	12	13
US	3.5	4.5	5	6	6.5	7.5	8.5	9	10	10.5	11.5	12	13	14

JEANS & TROUSERS

WAIST & LENGTH	SUGGESTED SIZE:	28/28	28/30	28/32	30/28	30/30	30/32	30/34	31/28	31/30
	Waist (cm)	71	71	71	76	76	76	76	79	79
	Inseam (cm)	71	76	81	71	76	81	86	71	76
	SUGGESTED SIZE:	31/32	31/34	31/36	32/28	32/30	32/32	32/34	32/36	33/28
	Waist (cm)	79	79	79	81	81	81	81	81	84
	Inseam (cm)	81	86	91	71	76	81	86	91	71
	SUGGESTED SIZE:	33/30	33/32	33/34	33/36	34/28	34/30	34/32	34/34	34/36
	Waist (cm)	84	84	84	84	86	86	86	86	86
	Inseam (cm)	76	81	86	91	71	76	81	86	91
	SUGGESTED SIZE:	36/28	36/30	36/32	36/34	36/36	38/28	38/30	38/32	38/34
WAIST	Waist (cm)	91	91	91	91	91	97	97	97	97
	Inseam (cm)	71	76	81	86	91	71	76	81	86
	SUGGESTED SIZE:	38/36	40/28	40/30	40/32	40/34	42/28	42/30	42/32	
	Waist (cm)	97	102	102	102	102	107	107	107	
INSEAM	Inseam (cm)	91	71	76	81	86	71	76	81	

TOPS & OUTERWEAR

CHEST/ZIP	SUGGESTED SIZE:	X-SMALL		SMALL		MEDIUM		LARGE		X-LARGE		2X-LARGE	
	INCHES	30	32	34	36	38	40	42	44	46	48	50	52
WAIST	CM	76	81	86	91	97	102	107	112	117	122	127	132
	INCHES	24	26	28	30	32	34	36	38	40	42	44	46
INSEAM	CM	61	66	71	76	81	86	91	97	102	107	112	117

NOTE: If your measurement falls between sizes, buy the larger size.

COVERALLS

CHEST	SUGGESTED SIZE IF WORN ALONE	38	40	42	44	46	48	50
	SUGGESTED SIZE IF WORN OVER OTHER CLOTHES	40	42	44	46	48	50	
	INCHES	34	36	38	40	42	44	46
	CM	86	91	97	102	107	112	117

NOTE: Measure both chest and waist. Use the larger of the two to determine coverall size. If your chest or waist measurement falls between sizes, buy the larger size.

BIB OVERALLS

CHEST	SUGGESTED SIZE IF WORN ALONE	28	30	32	34	36	38	40	42	44
	SUGGESTED SIZE IF WORN OVER OTHER CLOTHES	30	32	34	36	38	40	42	44	46
	INCHES	26	27-28	29-30	31-32	33-34	35-36	37-38	39-40	41-42
	CM	66	68-71	73-76	78-81	83-86	88-91	93-97	99-102	104-107
WAIST	SUGGESTED SIZE IF WORN ALONE	46	48	50	54	54	56	58	60	
	SUGGESTED SIZE IF WORN OVER OTHER CLOTHES	48	50	52	56	56	58	60		
	INCHES	43-44	45-46	47-48	49-50	51-52	53-54	55-56	57-58	
	CM	109-112	114-117	119-122	124-127	130-132	135-137	140-142	145-147	

NOTE: Measure both chest and waist. Use the larger of the two to determine overall size. If your chest or waist measurement falls between sizes, buy the larger size.

MEN'S BELTS

WAIST	SUGGESTED SIZE:	32		34		36		38		40		42		44	
	INCHES	28	30	31	32	34	35	36	37	38	39	40	41	42	
	CM	71	76	79	81	86	89	91	94	97	99	102	104	107	

TECHNOLOGIES



This technology wicks moisture away from the body to the outside of the garment. Next to this sweat wicking feature, extra features specified per Carhartt Force[®] could be: • Stain Breaker[®] technology releases stains • Anti odor • FastDry[®] faster drying • Carhartt Force[®] is a technology, not a fabric.



Force Extremes[®] is our lightest-weight, fastest-drying, odor-fighting gear. It's powered by 37.5[°] Technology, which is scientifically proven to give you more stamina. Force Extremes[®] keeps you dry and comfortable so you can end the day as strong as you started.



A durable water repellent finish to let water slide off the surface of a garment.



Waterproof breathable protection.



A technology to keep you extra warm when it's cold outside. The microfibers in the insulation capture air in the material so that there is more space between the outside and the body. Thereby, the body is better protected against cold outside air. 3M and Thinsulate are trademarks of 3M



A finish that allows stains to wash out easily.



FastDry[®] wicks away sweat and moisture from the fabric to help promote faster drying.



Wind Fighter™ is a technology that prevents wind from blasting through the fabric and reaching your skin.



Rugged Flex[®] gear meets Carhartt' s defined standards for stretch and recovery to give you extra range of motion so you can move and work easily in Rugged Flex garments.



Full Swing™ products include Rugged Flex[®] technology and engineered design to provide an improved range of motion without the bulk and weight.



Provides a high level of engineered outsole for grip, durability for a wide range of work and safety environments, with excellent heat and tear resistance.

DISCLAIMER

Our aim is to serve and protect hardworking men. Every attempt has been made to ensure accuracy of the product descriptions/colours in this catalogue at the time of printing. Please note that printed colours displayed in this sales tool may vary from the product colours. Our products and sketches shown in this catalogue are represented as accurately as possible, however we reserve the right to change product specifications or colours without previous notification.

SHELL FABRIC



Firm Duck

Our strongest cotton duck is the most durable canvas out there. Built with added toughness, firm duck is water-repellent, wind resistant, and rugged. If you like to break in your jackets and pants, firm duck is for you.

Find it in gear like our Firm Duck Chore Coat.



Duck

Good 'ol duck is stiff, ring-spun cotton. If you like your Carhartt solid, classic and durable as the day is long, this is the duck for you.

Find it in gear like our Duck Detroit Jacket and the Duck Bib Overalls.



Washed Duck

If you like sandstone duck, you'll like our washed duck. This fabric feels exactly like it sounds—we took our durable, classic duck, and washed it for a broken-in look and feel. It breaks in faster than duck, and looks newer, longer.

Find it in gear like our Full Swing® Armstrong Jacket.



Sandstone Duck

Sandstone duck is sanded and brushed for softness and comfort. The more you wear it, the more it breaks in—it's comfortable the first day you put it on and more comfortable and worn-in on the 50th.

Find it in gear like our Sandstone Active Jacket and Mock Neck Vest.



Quick Duck®

Quick Duck® is durable, and lighter than traditional sandstone duck. It's built with a durable water repellent, so water beads up and rolls off, and it doesn't require breaking in like sandstone—so your gear will always look fresh.

Find it in gear like our Quick Duck Full Swing® Cryder Jacket.



Rugged Flex® Duck

Rugged Flex Duck gives you the classic Carhartt look, with just the perfect amount of stretch. Made by combining our famous cotton Duck with Rugged Flex® durable stretch technology, the result is increased ease of movement everywhere it's needed, and our most comfortable heavyweight gear yet.

Find it in gear like our Stretch Duck Dungaree Trousers.