

Personal safety equipment use and maintenance

Always check all personal safety equipment before and after use.

Checking procedure

Safety equipment must be checked before and after each use to ensure working condition. All damaged and faulty parts must be replaced prior to use.

Follow these checking instructions:

1. Face piece (flap connection, flap cover, head harness)
 - Check for breaks, tears, and dirt.
 - Make sure the flaps are flexible.
2. Fan unit (base, battery lock, battery indicator, flap, seal, connectors)
 - Check the battery indicators are attached.
3. Battery (body, connectors)
 - Check for dirt, breaks, and warps.

4. Filter

- Check for dirt, breaks, and warps.
- Check the the seal contact surface for scratches.

5. Function

- Make sure the air starts to flow as you breathe into the mask.
- Make sure the airflow ends after approx. 5 seconds of removing the mask.

6. Airflow test

- Ensure the equipment is producing the right amount of airflow with a tester.
- See detailed instructions for using the airflow tester in section 2 "Airflow test"

See the manufacturer's instructions for Sync11 in section 6

Care and maintenance

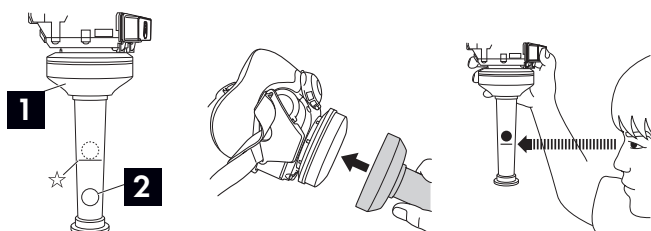


1. Remove battery and charge it for the next use.
2. Wipe off impurities before removing the filter from the fan. Remove filter and wipe off dirt and impurities from the filter case.
3. Wipe off dirt and impurities from the inhale valve. Avoid touching the inhale connector.
4. If using alcohol-based cleaning spray, allow the parts to fully dry in shade to avoid alcohol residue.

- Use a dry, soft cloth for cleaning the parts. If the parts are very dirty, dampen the cloth with a mild detergent.
- Do not wet the fan unit.
- Do not use other cleaning agents than water, neutral detergent, or alcohol-based disinfectant.
- Do not open the breathing monitor.

See the manufacturer's instructions for Sync11 in section 10

Airflow test



* Use fully charged battery and particle filter when testing the airflow

1. Attach the adapter (1) so that it covers the filter.
 2. Turn so that the airflow tester is perpendicular to the filter.
 3. Place the mask on your face and breathe to turn on the fan.
 4. Air starts to flow.
 5. Quickly remove the mask and hold the airflow tester perpendicular to the ground. Hold the airflow tester up so that the approval line (☆) on eye level. Check that the ball (2) is above the approval line. (The air flow stops after 5 seconds thanks to the automatic turn off feature.)
 6. If the ball is not above the approval line, replace the filter and redo the airflow test. Do not use the equipment until the ball is above the approval line.
- * If the ball is not above the approval while testing with a new filter, the equipment might be faulty. Contact your sales representative.

Please note! Read the manuals for the equipment delivered with the product prior to use.

The manufacturer's manuals contain more detailed instructions on the use of the equipment.

Personal safety equipment use and maintenance

Always check all personal safety equipment before and after use.



Filter STS VP3

10660051102

Hazardous solid and liquid particles, including micro-organisms.

Can be stored in an unopened package for up to 10 years from the date of manufacturing.



Filter cover for STS filter

10660053367

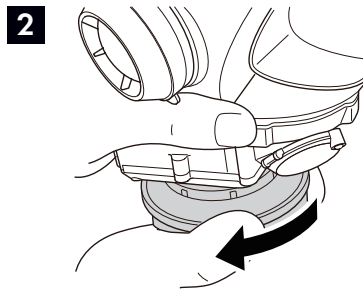
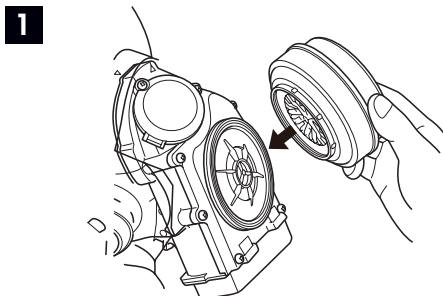
Use the equipment properly with a filter cover when welding.

Attaching the cover

1. Check the the positions of the ribs of the filter (1) and the clips of the filter cover (2).
2. Place the cover so that the ribs and clips do not go over each other and press the filter cover on the filter.

See the manufacturer's instructions in section I

Attaching the filter



1. Place the filter on the fan unit

2. Turn clockwise

See the manufacturer's instructions for VP3 section 5

Changing the filter



The face piece vacuum is maintained for the set time

1. The LED indicator for filter change blinks 5 times repeatedly.

2. LED light is turned off for 3 min

Replace the filter in case you

- notice smell, irritation or flavour.
- LED indicator blinks and turns off repeatedly

- When using the filter in an environment with impurities, such as asbestos, arsenic, or chrome, dispose the filter after use.
- Do not use pressurized air to blow off dirt from the filter.
- Do not hit or strike the filter hard.

- Do not wash the filter with water.
- The time before replacing the filter varies with the conditions, such as the user's breathing rate, the dustiness of the environment etc.
- Replace the filter in a safe location.

See the manufacturer's instructions for Sync11 in section 9 and 10

Please note! Read the manuals for the equipment delivered with the product prior to use.

The manufacturer's manuals contain more detailed instructions on the use of the equipment.

Personal safety equipment use and maintenance

Always check all personal safety equipment before and after use.



Powered air-purifying respirator STS SYNC11 TM3 half mask

- Modern breathing-responsive powered respirator
- Half-mask with powered air-purifying respirator.
- Cordless, no distracting cords or hoses
- High protection rating TM3, easy breathing, cost-effective.
- Harness with 2 parts, providing excellent fit for the silicone face piece.
- Light 450g (with VP3 filter)
- Battery capacity with VP3 filter 14.5 hours
- Charging time approx. 3.5 hours
- IP63 protection class
- EN 12942:1998+A2:2008 TM3 approved



Ready kit STS SYNC11 TM3

10660053366

The complete kit includes: half mask, fan unit, Li-Ion battery, charger, VP3 filter, filter cover, knit cover for motor, storage box.

Supplies & replacement parts STS SYNC11

Product code	Name	Tech. name
10660051107	Charger STS	41734, for SYNC01 / SYNC09 / SYNC11
10660051108	Battery STS	41735, for SYNC01 / SYNC09 / SYNC11
10660051110	Air flow tester STS FM-6	04478, for SYNC01 & SYNC11
10660051120	Motor gasket STS 41482	spare, SYNC01, SYNC11, SYNC09 10pcs
10660053367	Filter cover STS	50583, VP3, VA1P3, VABE1P3
10660055325	Half mask STS SYNC11 TM3	40490, mask only, MU-E11
10660055326	Exhale valve STS	41380 spare part SYNC11 / SYNC09 5pcs
10660055327	Inhale Valve STS	50123, spare part SYNC11, 5pcs/pkg
10660055328	Head Harness STS	41419, spare part SYNC11
10660055329	Filler piece for motor STS	03117, sponge, spare part SYNC11
10660055330	Motor cover STS	41450, spare part SYNC11 10pcs/pkg
10660055331	Fit test adapter STS	41551, SYNC01, SYNC11, SYNC09
10660072573	Battery lock STS Synchro 41795	spare part SYNC01 SYNC09 SYNC11



Charger STS
10660051107



Battery STS
10660051108



Air flow tester STS FM-6
10660051110