



DS 1500G(BKSS)

- Container Desiccant -

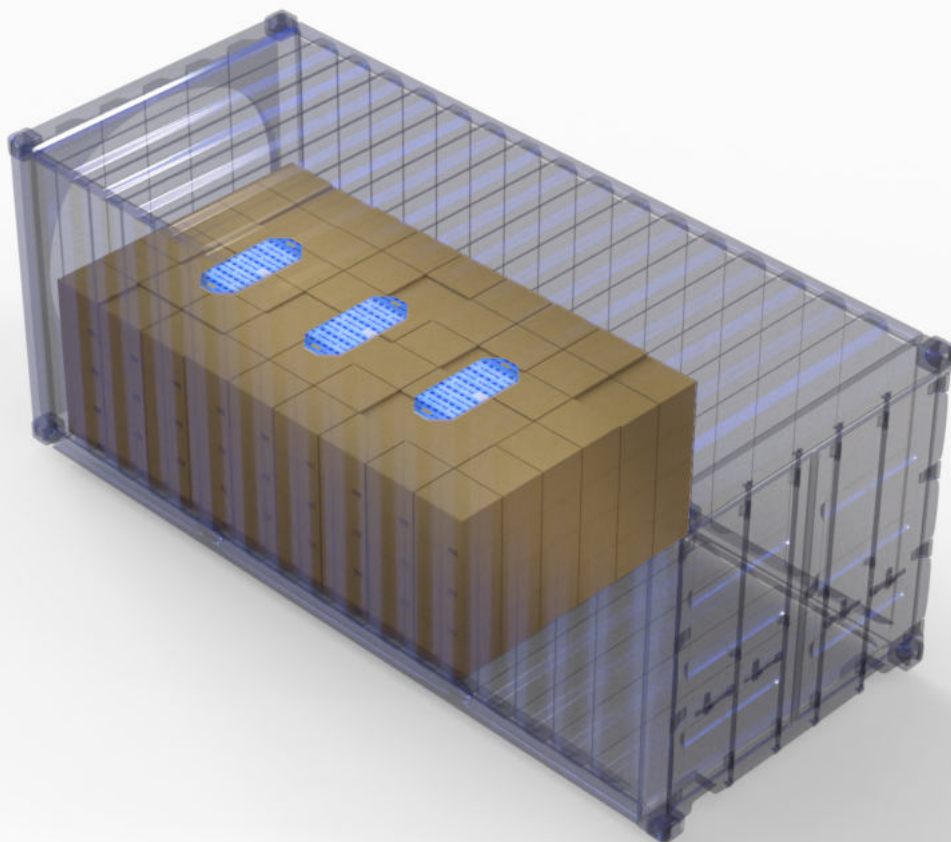
Super Dry desiccants are made of Calcium Chloride and starch. Calcium Chloride is a hygroscopic salt able to attract and bind large amounts of water. At 95% RH and 50°C over a period of 30 days, the moisture absorption rate of Super Dry desiccant is over 300% of the desiccant bags net weight.

Super Dry desiccants absorb moisture and turn the resultant mix into a gel by means of an irreversible reaction, which eliminates any possibility of leakage.

SD+



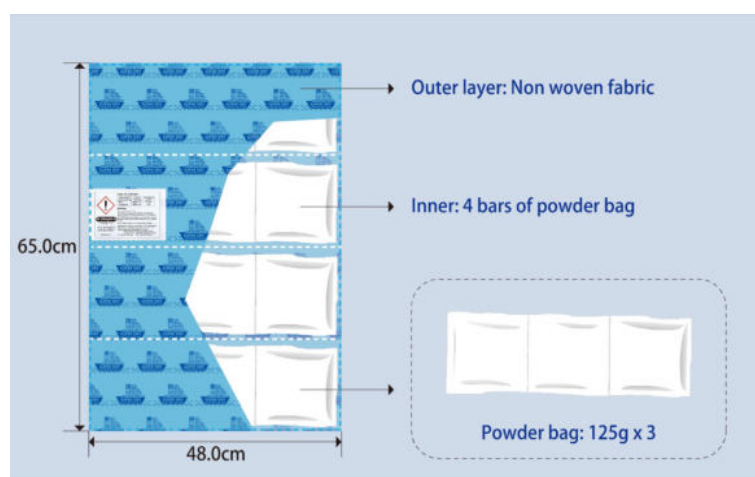
SD+
DS 1500g(BKSS)



CONTAINER DESICCANTS

Whether you ship containerized bulk loads, agricultural products, merchandise goods, industrial products or hanging garments. SUPER DRY offers a wide range of container desiccants for each application.

Our most powerful container desiccant. Fitted with self-adhesive pads. Ideal for applications, where the desiccant needs to be fixed to the cargo surface.



Super Dry desiccant

- ✓ ABSORBS MORE THAN 300% OF ITS OWN WEIGHT
- ✓ EFFECTIVE FOR UP TO 90 DAYS
- ✓ MOISTURE IS TURNED INTO A LEAKAGE FREE GEL
- ✓ BROAD APPLICATION TEMPERATURE RANGE FROM -5°C to +90°C
- ✓ REACH registered, NON TOXIC AND DMF FREE
- ✓ GLOBAL SALES & CUSTOMER SERVICE NETWORK

We prevent



Mould



Moisture



Damage

