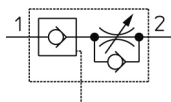


ASP, Speed Controller with Pilot Check Valve

ASP330F-01-06S

Datasheet

Series ASP is a speed controller with an integrated pilot check valve. This combination makes it possible to control cylinder speeds and permits temporary intermediate stops. The ASP is standard with electroless nickel plating on all brass parts and allows 360 degree freedom for tube mounting direction.

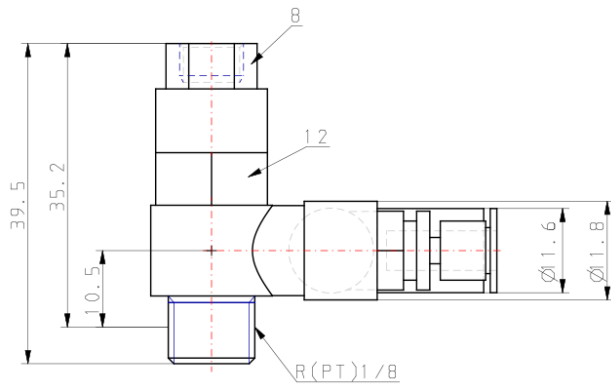
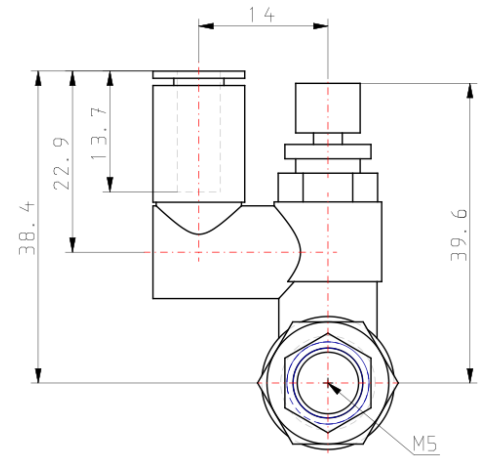
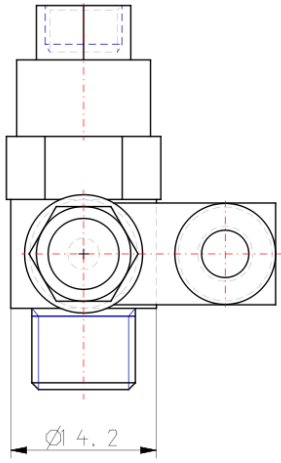


Speed controller with pilot check valve

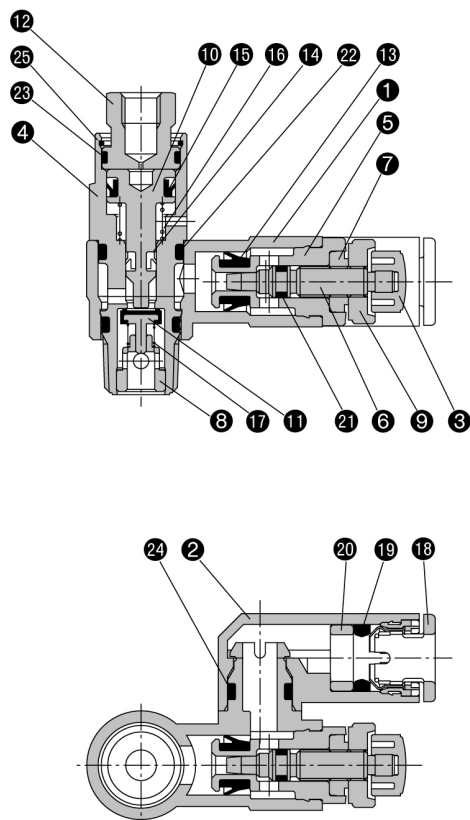
Standard specifications

Body Size	3 (1/8 Basis)
Port Size	01 (Cylinder Side [R [PT] 1/8] Pilot Port [M5X0.8])
Applicable Tube OD	Ø6
Made to Order	None
Lock Nut	Standard (Hexagon)
Pressure medium	Compressed Air
Maximum temperature of pressure medium	60 °C
Minimum temperature of pressure medium	-5 °C
Maximum operating pressure	1 MPa
F007-MIN_OP_PRESSURE	0.1 MPa
Proof pressure	1.5 MPa
Maximum ambient temperature	60 °C
Minimum ambient temperature	-5 °C
Function of Flow control valve	Meter-out
Flow rate	180 l/min
Pilot check valve actuation pressure	50 % or more of operating pressure
Number of needle revolutions	10
Weight	0.032 Kg

Dimensions



Constructions



Parts list

No.	Description	Material	Note
①	Body A	PBT	
②	Elbow body	PBT	
③	Knob	PBT	
④	Pilot body	Brass	Electroless nickel plated
⑤	Body B	Brass	Electroless nickel plated
⑥	Needle	Brass	Electroless nickel plated
⑦	Needle guide	Brass	Electroless nickel plated
⑧	Guide	Brass	Electroless nickel plated
⑨	Lock nut	Brass	Electroless nickel plated
⑩	Piston	Brass	Electroless nickel plated
⑪	Valve	Stainless steel, NBR	
⑫	Cover	Brass	Black zinc chromated
⑬	U seal	NBR	

Parts list

No.	Description	Material	Note
⑭	DY seal	PBT	
⑮	DY seal	PBT	
⑯	Spring	Stainless steel	
⑰	Spring	Stainless steel	
⑱	Cassette	POM, Stainless steel	Note 1)
⑲	Seal	NBR	
⑳	Spacer	POM	Note 2)
㉑	O-ring	NBR	
㉒	O-ring	NBR	
㉓	O-ring	NBR	
㉔	O-ring	NBR	
㉕	Ring	Stainless steel	

Note 1) $\phi 10$, $\phi 12$, $\phi 3/8"$, $\phi 1/2"$ are POM, stainless steel and brass (electroless nickel plated).

Note 2) $\phi 1/4"$, $\phi 3/8"$, $\phi 1/2"$ are brass (electroless nickel plated).

Additional information

Catalogue

[AS_EU.pdf](#)

Installation manuals

[IM_ASP_SMU62EN-A.pdf](#)