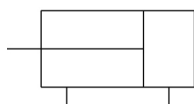


MGF, Low Profile Guide Table MGF100TF-30

Datasheet

Series MGF guide tables are low profile, compact cylinders which utilize a large concentric guiding sleeve to provide excellent eccentric load resistance. Mounting is possible from 2 directions. A built-in non-rotating mechanism prevents rotation of the table top. T-slots are provided on 3 faces of the MGF body (except port face), allowing mounting of various brackets. Optional auto switches can be mounted on 4 faces of the body.



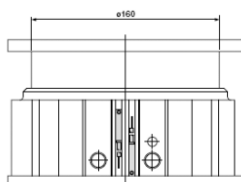
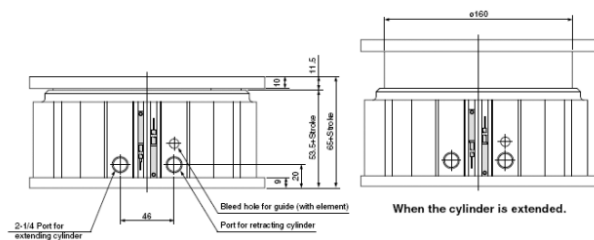
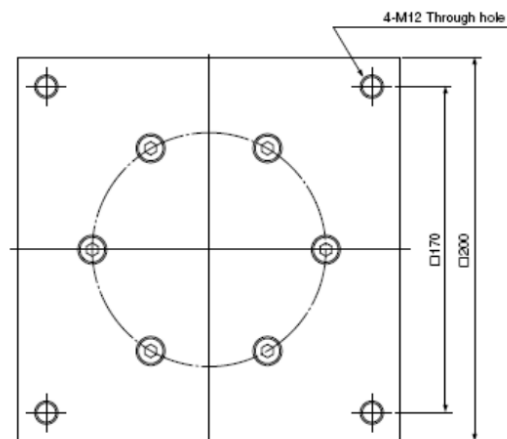
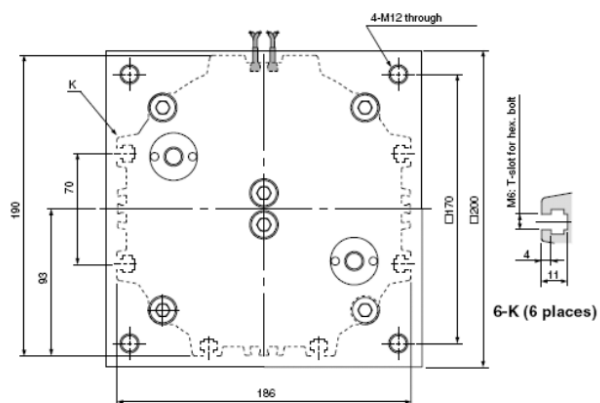
Double-acting, single-rod cylinder

Standard specifications

Bore Size	100mm
Port Thread	TF (G)
Stroke	30mm
Auto Switch	No Switch
Lead Wire or Prewired Connector	0.5m (Or None in the Case of No Switch)
Number	2 pcs. (Or None in the Case of No Switch)
Pressure medium	Air
Maximum temperature of pressure medium	60 °C
Minimum temperature of pressure medium	-10 °C
Maximum operating pressure	1.0 MPa
Minimum operating pressure	0.1 MPa
Proof pressure	1.5 MPa
Maximum ambient temperature	60 °C
Minimum ambient temperature	-10 °C
Conform to the European RoHS Directive	Conform
Number of pneumatic connections	2 pcs.
Pneumatic input connection	G 1/4
Mode of operation of drive	Double acting
Theoretical cylinder force, advance stroke (at 0.5 MPa)	3926 N
Theoretical cylinder force, return stroke (at 0.5 MPa)	3417 N

Maximum piston speed	200 mm/s
Type of cushioning	Rubber bumper at both ends
Minimum piston speed	20 mm/s
Non-rotating accuracy of plate	$\pm 0.05^{\circ}$
Lubrication	Not required
Allowable rotational torque	30 N·m
Weight	7.540 Kg

Dimensions



When the cylinder is extended.

Additional information

Catalogue

[MGF_EU.pdf](#)