

KK*P-*F, S-Couplers, Female Thread

KK3P-02F

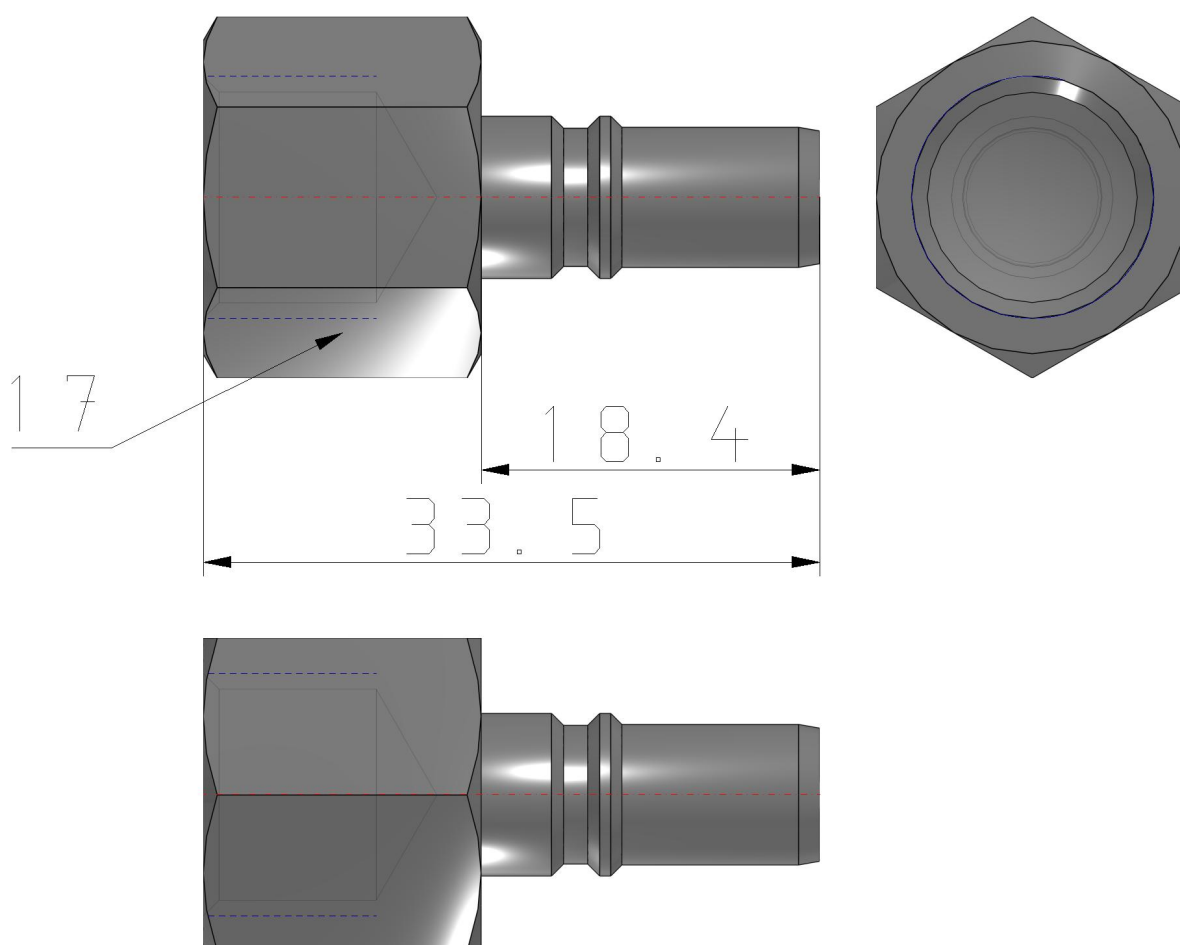
Datasheet

- Female Thread.
- Body size: M5, 1/8, 1/4, 1/2.
- Applicable Port Size: M5, Rc1/8, Rc1/4, Rc3/8, Rc1/2.

Standard specifications

Body Size	3 (1/8)
Piping Port Size	Rc 1/4
-	Air, Water
Maximum operating pressure	1.0 MPa
Minimum operating pressure	-90 kPa
Proof pressure	1.5 MPa
Effective Area	20 mm ²
Sealing principle	Electroless nickel plated (copper-free application), With male thread sealant

Dimensions



Additional information

Catalogue

[KK-C_EU.pdf](#)