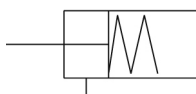


C(D)QS, Compact Cylinder, Single Acting, Single Rod CQSB20-5T

Datasheet

General series information

- Spring extend or spring return
- Bore sizes in mm: 12, 16, 20, 25
- Strokes: 5mm & 10mm
- Mounts: through hole, both ends tapped, foot, front or rear flanges
- Variety of switches and a variety of lead wire lengths



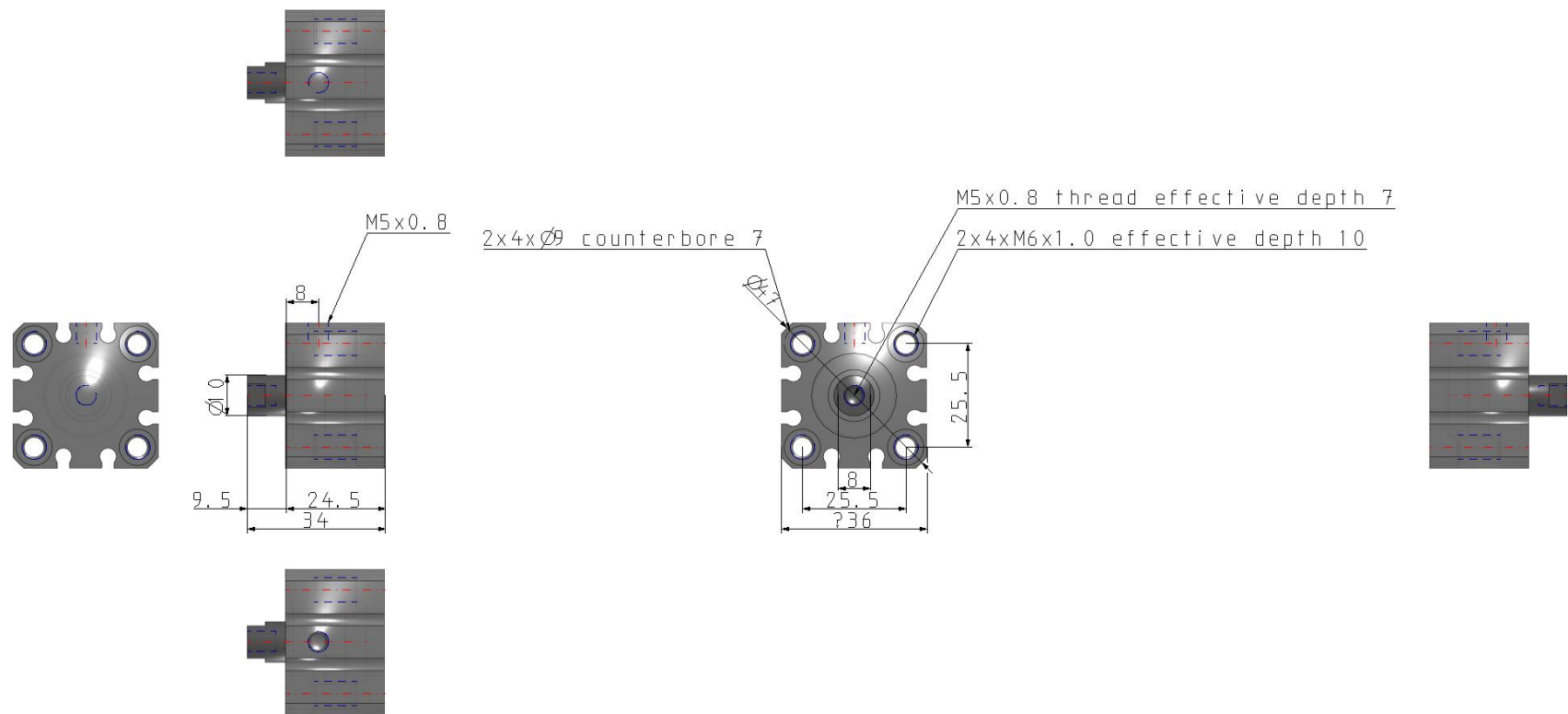
Single-acting cylinder, single piston rod, stroke
by spring, return stroke by air pressure

Standard specifications

Mounting	B (Through Hole, Both Ends Tapped)
Bore Size	Ø20 mm
Stroke	5 mm
Action	T (Single Acting Spring Extend)
Lead Wire or Prewired Connector	0.5 m (Or None in the Case of No Switch)
Number	2 pcs. (Or None in the Case of No Switch)
Magnet	None
Rod End Options	None
Option	Standard (Rod End Female Thread)
Auto Switch	No Switch
Pressure medium	Air
Maximum temperature of pressure medium	70 °C
Minimum temperature of pressure medium	-10 °C
Maximum operating pressure	1.0 MPa
Minimum operating pressure	0.18 MPa
Proof pressure	1.5 MPa
Maximum ambient temperature	70 °C
Minimum ambient temperature	-10 °C

Number of pneumatic connections	1 pc.
Pneumatic input connection	M5
Mode of operation of drive single	Single acting, spring extend
Theoretical cylinder force, return stroke (at 0.5 MPa)	91 N
Maximum piston speed	500 mm/s
Piston rod end	Internal thread
Geometric form of the piston rod	Round piston rod
Malethread of rod end	M5
Minimum piston speed	50 mm/s
Lubrication	Non-lube
Weight	0.079 Kg

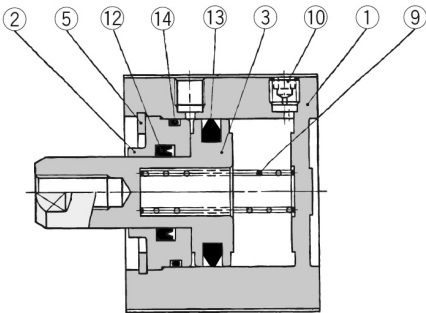
Dimensions



Constructions

Construction

Single acting/Spring extend



Component Parts

No.	Description	Material	Note
1	Cylinder tube	Aluminium alloy	Hard anodised
2	Collar	Aluminium bearing alloy	Anodised
3	Piston	Aluminium alloy	Spring return
		Stainless steel	Spring extend
5	Snap ring	Carbon tool steel	Phosphate coating
9	Return spring	Piano wire	Zinc chromated
10	Plug with fixed orifice	Alloy steel	Nickel plated
12	Rod seal	NBR	
13	Piston seal	NBR	
14	Tube gasket	NBR	

Additional information

Catalogue

[CQS_EU.pdf](#)