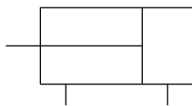


MK-Z Rotary Clamp Cylinder, Standard w/Auto Switch Mounting Grooves MKB16-20LZ

Datasheet

Following customer requests for range of easy to maintain rotary clamp cylinders with a good selection of stroke variations and dual mounting options, our R&D engineers have simply taken the best features of two existing SMC products – Series MK and MK2 - and put them together in our newly amalgamated and improved Series MK. Available in bore sizes from 12 to 63mm and in clamp stroke lengths up to 50mm depending on the selected model, the new MK Series helps answer our customer's needs with the option of both body and through hole mounting selections and easy maintenance possibilities with fully replaceable seals and guide pins. Designed for use with our compact D-M9 auto switch, which can be mounted on all four sides (only 2 sides in the case of 20 and 25mm) these new rotary clamp cylinders when required can also be used in conjunction with our magnetic field resistant auto switch Series D-P3DW.

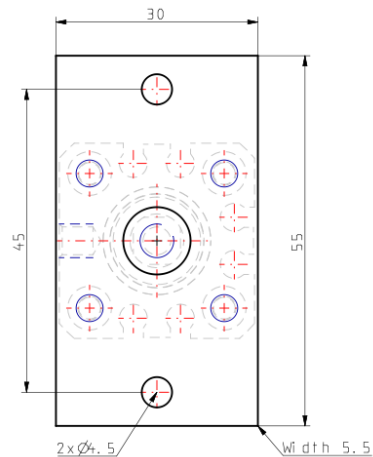
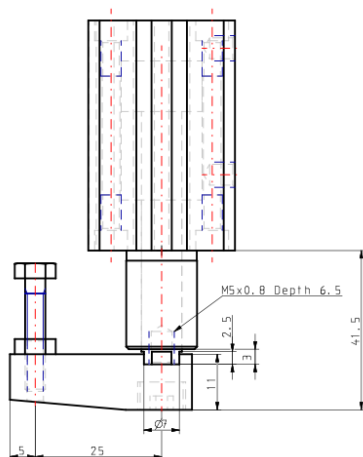
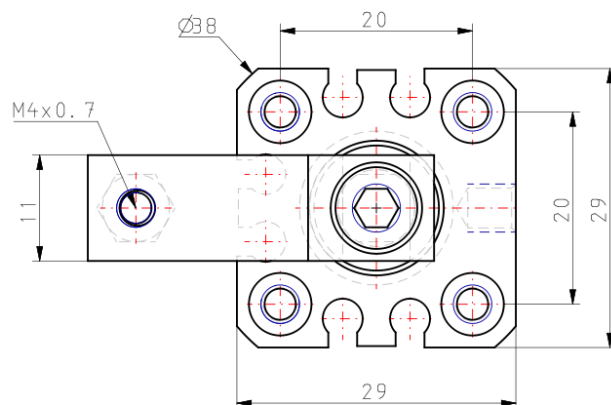
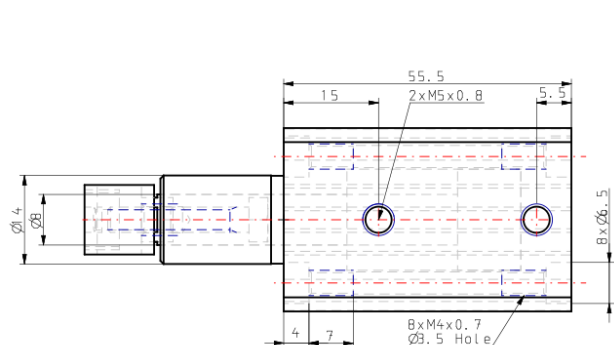


Double-acting, single-rod cylinder

Standard specifications

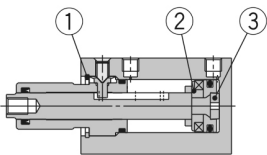
Mounting	B (Through-hole/Both Ends Tapped Common, Basic)
Bore Size	Ø16 mm
Port Thread	M thread: Ø12 to Ø25, Rc: 32 to 63
Clamp Stroke	20 mm
Rotary Direction	L (Counterclockwise)
Body Option	Standard (Female Thread)
Auto Switch	No Switch
Lead Wire or Prewired Connector	0.5m [Or None in the Case of No Switch]
Number	2 pcs. [Or None in the Case of No Switch]
Made to Order	None
Pressure medium	Air
Maximum temperature of pressure medium	70 °C
Maximum temperature of pressure medium with magnet	60 °C
Minimum temperature of pressure medium	-10 °C (No freezing)
Minimum temperature of pressure medium with magnet	-10 °C (No freezing)
Maximum operating pressure	1.0 MPa
Minimum operating pressure	0.1 MPa
Proof pressure	1.5 MPa
Maximum ambient temperature	70 °C
Maximum ambient temperature with magnet	60 °C
Minimum ambient temperature	-10 °C (No freezing)
Minimum ambient temperature with magnet	-10 °C (No freezing)
Numero of pneumatic connections	2 pcs.
Pneumatic input connection	M5
Pneumatic exhaust connection	M5
Mode of operation of drive	Double acting
Theoretical cylinder force, advance stroke (at 0.5 MPa)	101 N
Theoretical cylinder force, return stroke (at 0.5 MPa)	75 N
Maximum piston speed	200 mm/s
Type of cushioning	Rubber bumper
Piston rod end	Female thread
Female thread of rod end	M5
Weight	0.113 Kg

Dimensions

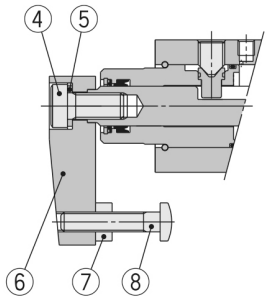


Constructions

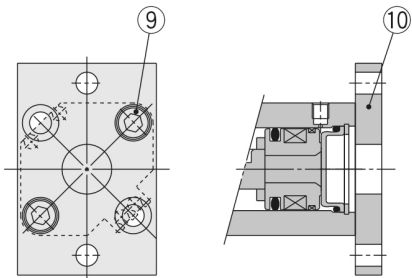
New MK12, 16



With arm (N)



Head flange (G)



Component Parts

No.	Description	Material	Note
1	Round R-type retaining ring	Carbon tool steel	
2	Magnet holder	Aluminum alloy	Chromated
3	Bumper B	Urethane	
4	Hexagon socket head cap screw	Chromium molybdenum steel	
5	Spring washer	Hard steel	
6	Arm	Rolled steel	
7	Hexagon nut	Rolled steel	
8	Clamp bolt	Chromium molybdenum steel	
9	Hexagon socket head cap screw	Chromium molybdenum steel	4 pcs.
10	Flange	Rolled steel	

Additional information

Catalogue

[MK-A_EU.pdf](#)

Related products



[AS*2/3*1FS, Speed Controller with Indicator, Elbow & Universal Types](#)



[AS*2/3*1F-A, Speed Controller with One-touch Fitting, Push Lock, Elbow/Universal Type](#)



[AS*2F, Speed Controller, One-touch Fitting, In-line, Compact](#)



[SY5000, 5 Port Solenoid Valve, All Types \(New Product\)](#)



[M9NW/M9PW/M9BW, 2 Colour Indication Style Solid State Switch, Direct Mounting, Grommet, In-line](#)