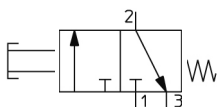


VM200, 200 Series 2/3 Port Mechanical Valve VM230-02-32GA

Datasheet

General series information

- Fluid: Air/Inert gas.
- Large flow capacity.
- Possible to choose mounting method with side ported.
- Variety of actuator types.

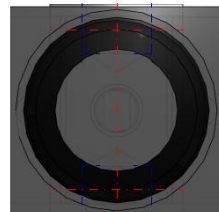
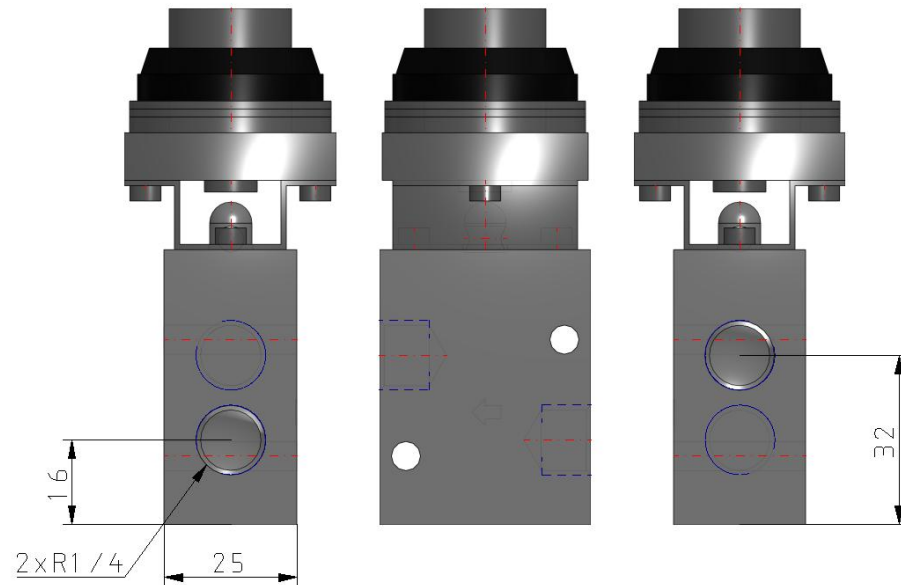
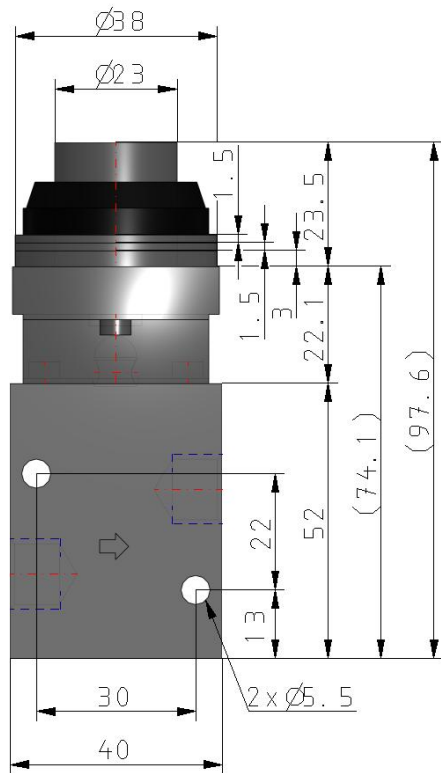
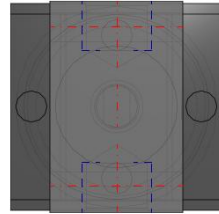


*Directional control valve 3/2-way valve, closed
normal position With a push control
mechanism Return with mechanical control
spring*

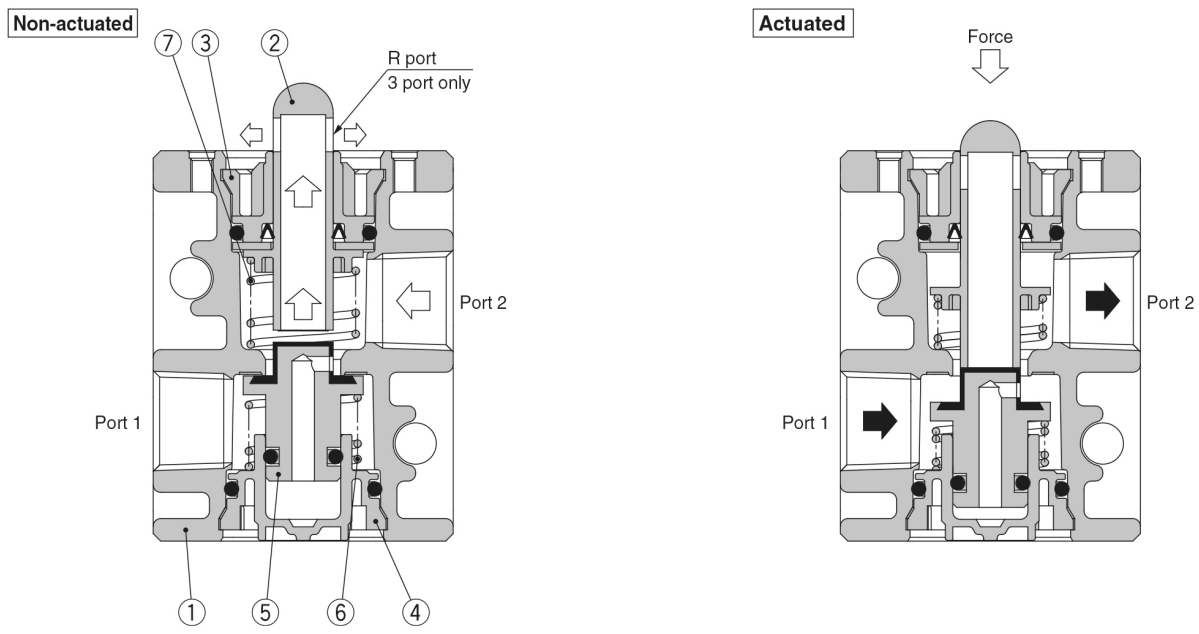
Standard specifications

Bracket	None
Suffix	G (Green)
Number of Ports	3 Port
Actuator type	32 (Push Button, Extended)
Port Size	02 (R 1/4)
Body Option	Side Mounting
Pressure medium	Air/Inert gas
Maximum temperature of pressure medium	60 °C
Minimum temperature of pressure medium	-5 °C (No freezing)
Maximum operating pressure	1.0 MPa
Minimum operating pressure	0 MPa
Maximum ambient temperature	60 °C
Minimum ambient temperature	-5 °C (No freezing)
Pneumatic input connection	R 1/4
Pneumatic exhaust connection	R 1/4
Function in normal position	Exhausted
Type of piloting	Directly
Valve return	Mechanical spring
Flow rate	1088 l/min

Critical pressure ratio	0.4
Sonic conductance dm ³ /(s·bar)	4
Actuation type	Manually
Weight	0.142 Kg



Constructions



Component Parts

No.	Description	Material	Note	
1	Valve	ADC	White coated	
2	Plunger	Polyacetal	2 port	Grey
			3 port	White
3	Plunger retainer	PBT		
4	Cover	PBT		
5	Inner valve	NBR, Brass		
6	Spring	Stainless steel		
7	Spring	Spring steel		

Additional information

Catalogue	VM100-200-A_EU.pdf
Installation manuals	IM_VM100_TF2Z478EN-C.pdf