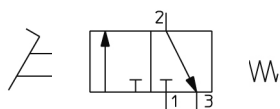


## VM200, 200 Series 2/3 Port Mechanical Valve VM230-02-40A

### Datasheet

We have upgraded our long life 2/3 port mechanical valve, VM 100/200 Series that has been redesigned with simplicity in mind. Brighter in appearance, the VM100/200 can withstand harsh operating conditions, demonstrating an ongoing commitment to refine our products. The series' lightweight and compact design, delivers both cost and space savings. It has four mounting variations, two piping options and several types of actuators that can be easily interchanged and/or replaced. Visual control has been simplified thanks to colourful push button and twist selector options; plus a small, visual indicator on the VM100 bottom ported model also makes maintenance checks easier to perform. Suitable for a wide range of applications, including vacuum, the VM 100/200 is ideal for pneumatic control panels and confirming the position of a workpiece using a pneumatic signal.



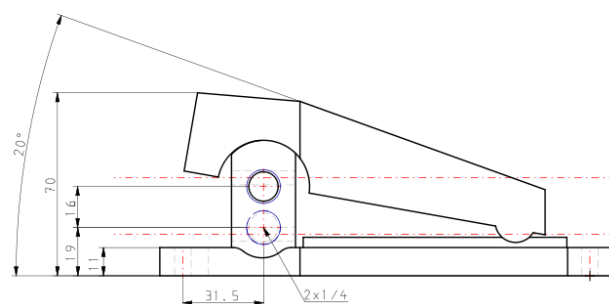
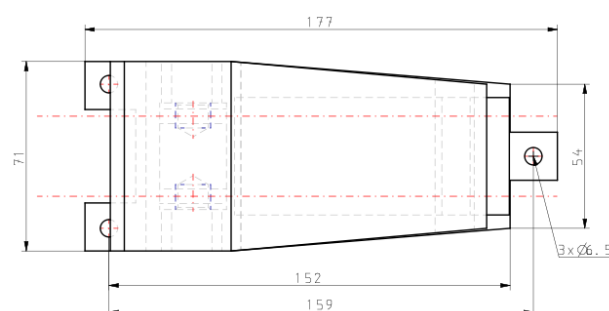
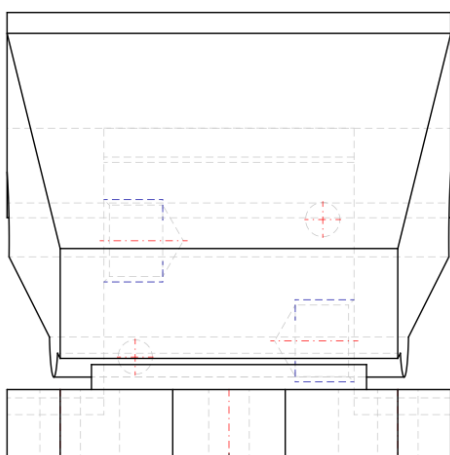
*Return with mechanical control spring*

### Standard specifications

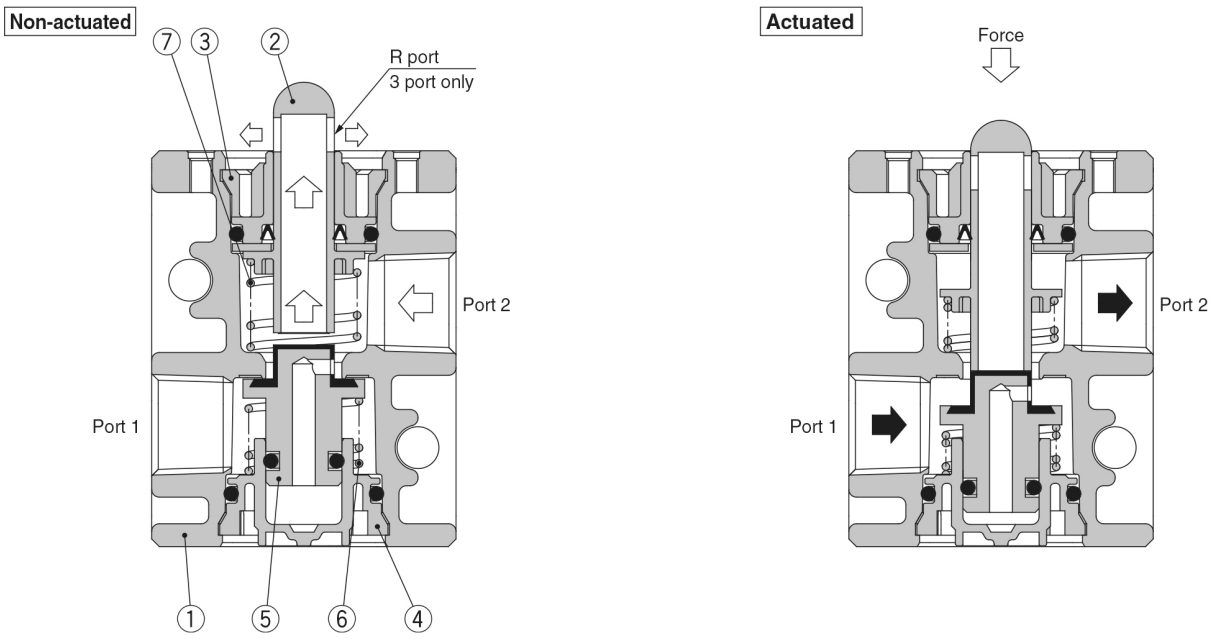
|  |                     |
|--|---------------------|
| Number of Ports                        | 3 Port              |
| Body Option                            | Side Mounting       |
| Port Size                              | 02 (R 1/4)          |
| Actuator type                          | 40 (Foot Pedal)     |
| Suffix                                 | None                |
| Bracket                                | None                |
| Pressure medium                        | Air/Inert gas       |
| Maximum temperature of pressure medium | 60 °C               |
| Minimum temperature of pressure medium | -5 °C (No freezing) |
| Maximum operating pressure             | 1.0 MPa             |
| F007-MIN_OP_PRESSURE                   | 0 MPa               |
| Maximum ambient temperature            | 60 °C               |
| Minimum ambient temperature            | -5 °C (No freezing) |
| Conform to the European RoHS Directive | Conform             |
| Pneumatic input connection             | R 1/4               |
| Pneumatic exhaust connection           | R 1/4               |

|  |                   |
|--|-------------------|
| Function in normal position                | Exhausted         |
| Type of piloting                           | Directly          |
| Valve return                               | Mechanical spring |
| Flow rate                                  | 1088 l/min        |
| Critical pressure ratio                    | 0.4               |
| Sonic conductance dm <sup>3</sup> /(s·bar) | 4                 |
| Actuation type                             | Manually          |
| Weight                                     | 0.430 Kg          |

## Dimensions



Constructions



Component Parts

| No. | Description      | Material        | Note         |       |
|-----|------------------|-----------------|--------------|-------|
| 1   | Valve            | ADC             | White coated |       |
| 2   | Plunger          | Polyacetal      | 2 port       | Grey  |
|     |                  |                 | 3 port       | White |
| 3   | Plunger retainer | PBT             |              |       |
| 4   | Cover            | PBT             |              |       |
| 5   | Inner valve      | NBR, Brass      |              |       |
| 6   | Spring           | Stainless steel |              |       |
| 7   | Spring           | Spring steel    |              |       |

## Additional information

|                      |                                     |
|----------------------|-------------------------------------|
| Catalogue            | <a href="#">VM100-200-A_EU.pdf</a>  |
| Installation manuals | <a href="#">im_vm_smt03en-a.pdf</a> |