



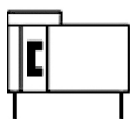
## MY1B-Z, Mechanical Joint Rodless Cylinder, Basic Type w/o Stroke Adjustment

### MY1B40TFG-700Z

Datasheet

### General series information

- w/o Stroke Adjustment Unit
- Easy adjustment of the cushion needle.
- Entrance of external particle is reduced, reliability improved and maintenance costs reduced.
- Piping flexibility because it can be connected in 4 directions and it can be selected from 2 types (standard and centralised).
- Flexibility in the auto switch mounting.

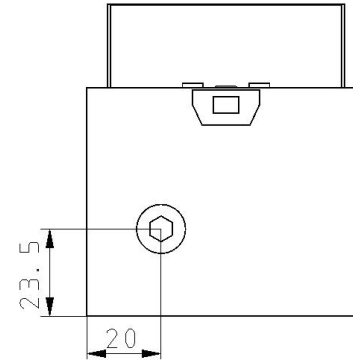
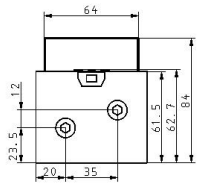


Mechanically Jointed Rodless Cylinder

### Standard specifications

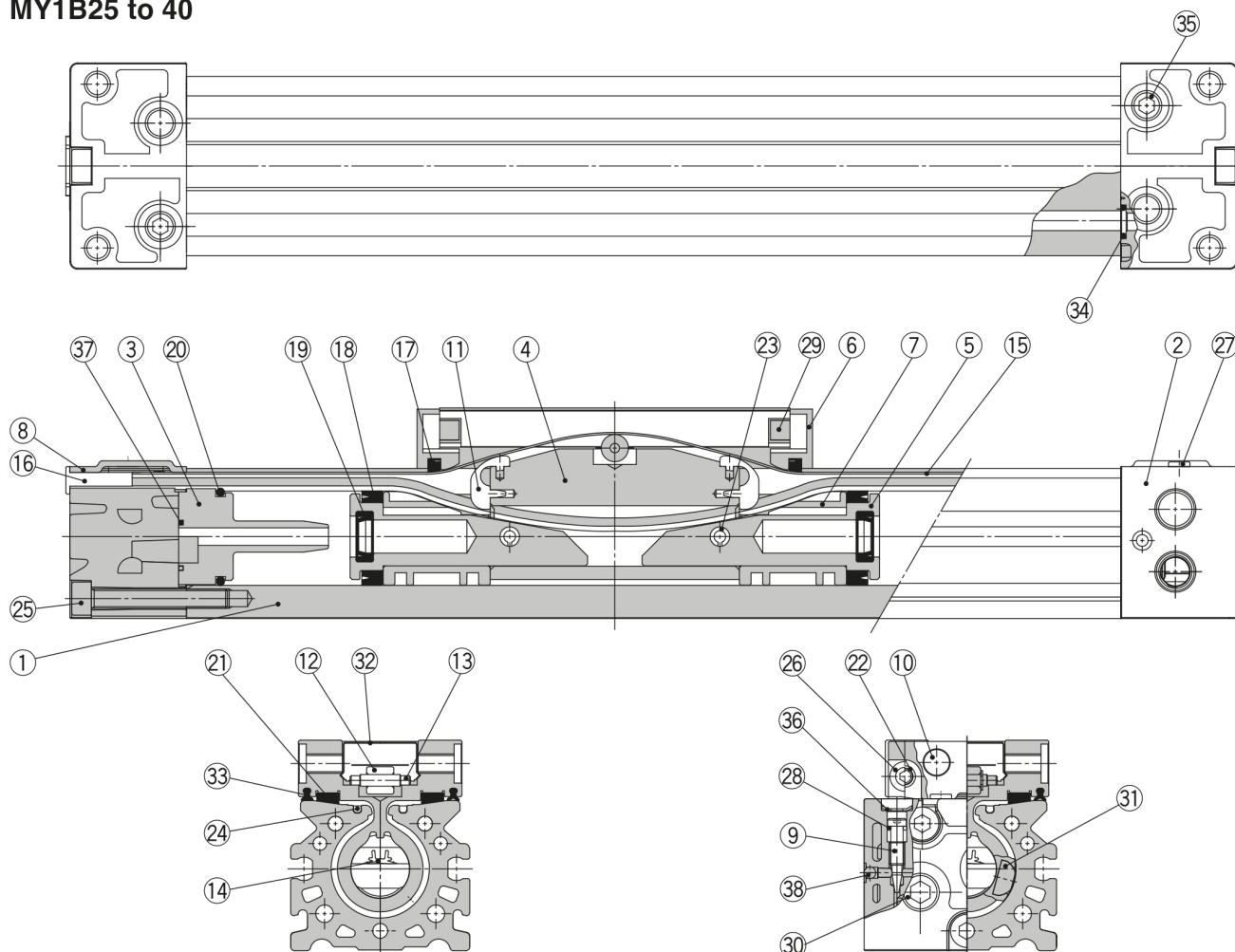
|  |   |
|--|---|
| Bore Size  | 40mm                                      |
| Stroke   | 700                                       |
| Lead Wire or Prewired Connector                    | 0.5m (Or None in the Case of No Switch)   |
| Piping   | G (Centralized Piping Type)               |
| Number   | 2 pcs. (Or None in the Case of No Switch) |
| Port Thread  | TF (G)                                    |
| Stroke Adjustment Unit                             | Left: w/o Unit; Right: w/o Unit           |
| Auto Switch  | No Switch                                 |
| Pressure medium                                    | Compressed air                            |
| Maximum temperature of pressure medium             | 60 °C                                     |
| Maximum temperature of pressure medium with magnet | 60 °C                                     |
| Minimum temperature of pressure medium             | 5 °C                                      |
| Minimum temperature of pressure medium with magnet | 5 °C                                      |
| Maximum operating pressure                         | 0.8 MPa                                   |
| Minimum operating pressure                         | 0.1 MPa                                   |
| Proof pressure                                     | 1.2 MPa                                   |
| Maximum ambient temperature                        | 60 °C                                     |

|   |               |
|---|---------------|
| Maximum ambient temperature with magnet                 | 60 °C         |
| Minimum ambient temperature                             | 5 °C          |
| Minimum ambient temperature with magnet                 | 5 °C          |
| Pneumatic input connection                              | G 1/4         |
| Mode of operation of drive single                       | Double Acting |
| Theoretical cylinder force, advance stroke (at 0.5 MPa) | 628 N         |
| Maximum piston speed                                    | 1000 mm/s     |
| F040-Typ_of_cush  | Air Cushion   |
| Number of pneumatic connections                         | 2 pcs.        |
| Usable tubing material                                  | PU            |
| Weight  | 6.610 Kg      |



## Constructions

### MY1B25 to 40



#### Component Parts

| No. | Description    | Material                   | Qty. | Note          |
|-----|----------------|----------------------------|------|---------------|
| 1   | Cylinder tube  | Aluminium alloy            | 1    | Hard anodised |
| 2   | Head cover     | Aluminium alloy            | 2    | Painted       |
| 3   | Cushion boss   | Polyacetal                 | 2    |               |
| 4   | Piston yoke    | Aluminium alloy            | 1    | Anodised      |
| 5   | Piston         | Aluminium alloy            | 2    | Chromated     |
| 6   | End cover      | Polyacetal                 | 2    |               |
| 7   | Wear ring      | Polyacetal                 | 2    |               |
| 8   | Head plate     | Stainless steel            | 2    |               |
| 9   | Cushion needle | Rolled steel               | 2    | Nickel plated |
| 10  | Stopper        | Carbon steel               | 4    | Nickel plated |
| 11  | Belt separator | Polyacetal                 | 2    |               |
| 12  | Guide roller   | Polyacetal                 | 1    |               |
| 13  | Parallel pin   | Carbon steel               | 1    |               |
| 16  | Belt clamp     | Polybutylene terephthalate | 2    |               |
| 21  | Bearing        | Polyacetal                 | 2    |               |

| No. | Description                      | Material                  | Qty. | Note                                      |
|-----|----------------------------------|---------------------------|------|---|
| 22  | Spacer                           | Stainless steel           | 4    |   |
| 23  | Spring pin                       | Carbon tool steel         | 2    |   |
| 24  | Seal magnet                      | Rubber magnet             | 2    |   |
| 25  | Hexagon socket head cap screw    | Chromium molybdenum steel | 6    | Chromated                                 |
| 26  | Hexagon socket button head screw | Chromium molybdenum steel | 4    | Chromated                                 |
| 27  | Thin head screw                  | Chromium molybdenum steel | 4    | Chromated                                 |
| 29  | Double round parallel key        | Carbon steel              | 2    |   |
| 30  | Hexagon socket head taper plug   | Carbon steel              | 4    | Chromated<br>(Centralised piping: 7 pcs.) |
| 31  | Magnet                           | Rare earth magnet         | 2    |   |
| 32  | Top cover                        | Stainless steel           | 1    |   |
| 35  | Hexagon socket head taper plug   | Carbon steel              | 2    | Chromated<br>(Centralised piping: 3 pcs.) |
| 36  | Type CR retaining ring           | Spring steel              | 2    |   |
| 38  | Steel ball                       | Spring steel              | 2    |   |

## Additional information

Catalogue

[MY1B-Aa\\_EU.pdf](#)

Operation manuals

[OM\\_MY1\\_MYZZ-OM0009QEN.pdf](#)