

## M(D)U Plate Cylinder, Double Acting, Single Rod w/Auto Switch Mounting Groove MDUB25-100DZ

Datasheet

### General series information

- Plate Cylinder, Double Acting, Single Rod.
- Reduced labour when mounting the switch.
- Auto-switch doesn't protrude.
- It's possible to mount the autoswitches in four directions.
- A maximum 62% width reduction.



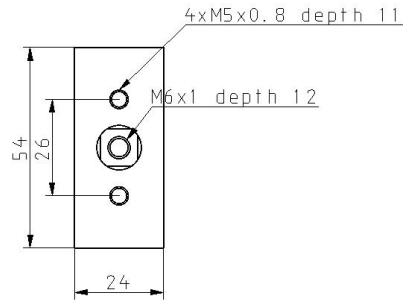
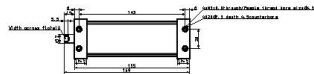
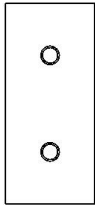
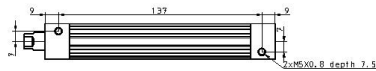
Double-acting, single-rod cylinder

### Standard specifications

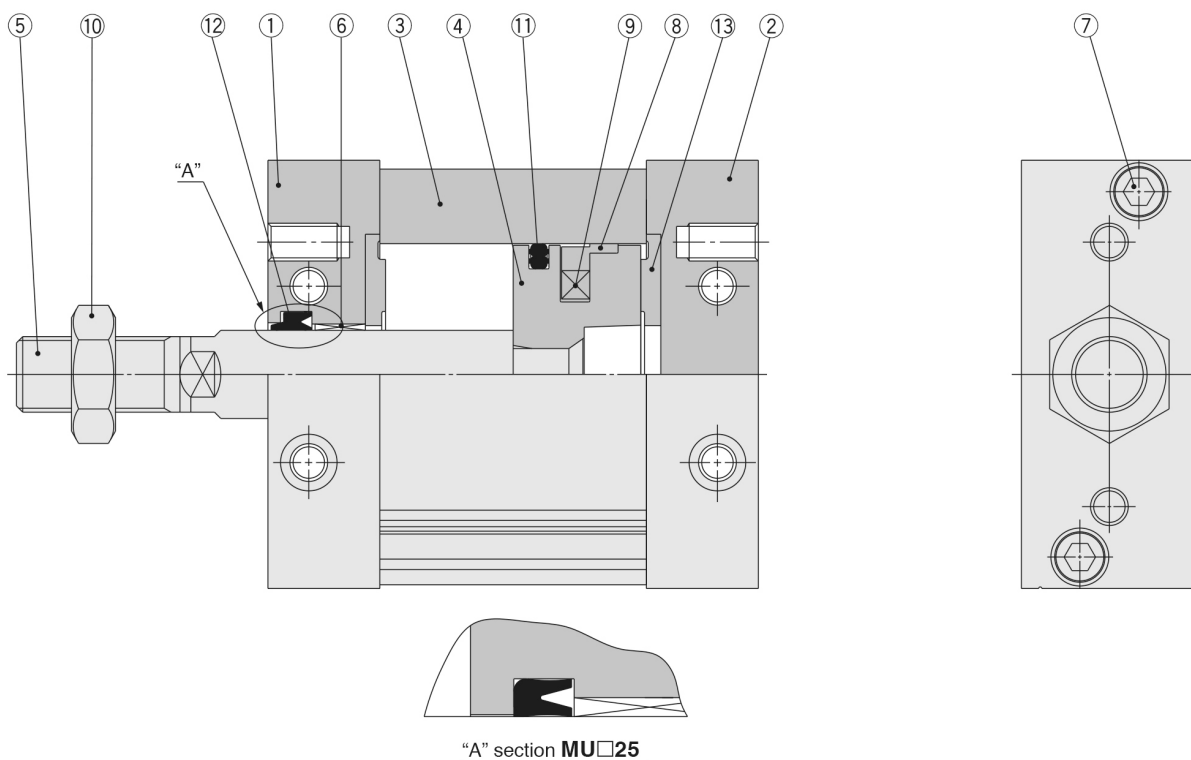
Mounting	B (Basic)
Stroke	100
Lead Wire or Prewired Connector	0.5m (Or None in the Case of No Switch)
Number	2 pcs. (Or None in the Case of No Switch)
Magnet	D (Built-in)
Size	25 (Equiv. Ø25 Piston Area)
Rod End	Female Thread
Auto Switch	None
Port Thread Type	M thread: ø25, Rc: 32 to 63
Maximum operating pressure	0.7 MPa
Minimum operating pressure	0.05 MPa
Proof pressure	1.05 MPa
Mode of operation of drive	Double acting
Theoretical cylinder force, advance stroke (at 0.5 MPa)	246 N
Theoretical cylinder force, return stroke (at 0.5 MPa)	189 N
Maximum piston speed	500 mm/s
Type of cushioning	Rubber Bumper
Minimum piston speed	50 mm/s

Lubrication	Not required (non-lube)
Allowable rotational torque	0.25 N·m
Maximum ambient and fluid temperature	60 °C
Minimum ambient and fluid temperature	- 10 °C
Fluid	Air
Rod non-rotating accuracy	±1°
Stroke length tolerance	+1.4 0
Weight	0.420 Kg

Dimensions



## Constructions



### Component Parts

No.	Description	Material	Note
1	<b>Rod cover</b>	Aluminum alloy	Anodised
2	<b>Head cover</b>	Aluminum alloy	Anodised
3	<b>Cylinder tube</b>	Aluminum alloy	Hard anodised
4	<b>Piston</b>	Aluminum die-casted	Chromated
5	<b>Piston rod</b>	Carbon steel	Hard chrome plated
6	<b>Bushing</b>	Oil-impregnated sintered alloy	
7	<b>Hexagon socket head bolt</b>	Stainless steel	
8	<b>Wear ring</b>	Resin	
9	<b>Magnet</b>	—	Only built-in magnet type
10	<b>Rod end nut</b>	Rolled steel	Only attached to rod end male thread
11	<b>Piston seal</b>	NBR	
12	<b>Rod seal</b>	NBR	
13	<b>Bumper</b>	Urethane	

## Additional information

Catalogue

[MU\\_EU.pdf](#)