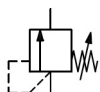


AR20(*)-B to AR60(*)-B, Regulator & Regulator w/Backflow Function AR50-F06E-B

Datasheet

Cost effective and clean looking, series AR-B regulators offer various pressure range settings to accommodate most applications. The locking adjustment knob prevents accidental setting changes. The modular design of the AR series connects with other SMC air preparation equipment.

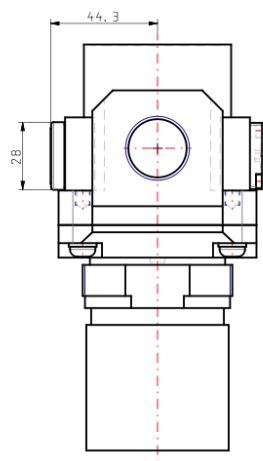
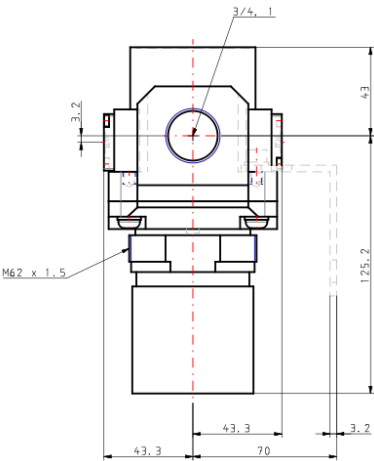
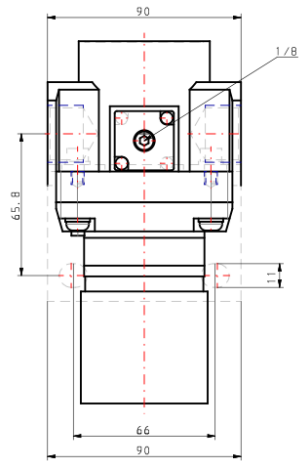


Pressure control valve, relieving pressure regulator, adjustable

Standard specifications

| | |
|--|---|
| Made to Order 1 | None |
| Body Size | 50 |
| Backflow Function | None |
| Thread | F (G) |
| Port | 06 (3/4) |
| Option | E (Square embedded type pressure gauge, with limit indicator) |
| Semi-standard | Standard |
| Made to Order 2 | None |
| Pressure medium | Air |
| Maximum temperature of pressure medium | 60 °C |
| Minimum temperature of pressure medium | -5 °C [with no freezing] |
| Maximum operating pressure | 1.0 MPa |
| Proof pressure | 1.5 MPa |
| Maximum ambient temperature | 60 °C |
| Minimum ambient temperature | -5 °C [with no freezing] |
| Conform to the European RoHS Directive | Conform |
| Approvals | No need |
| Weight | 1.174 Kg |

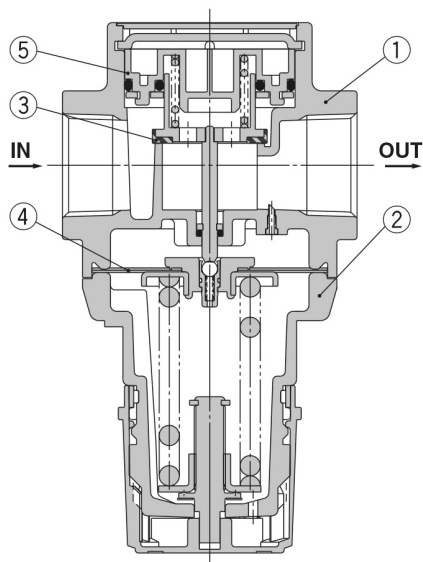
Dimensions



Constructions

Construction

AR50(K)-B/AR60(K)-B



Component Parts

| No. | Description | Material | Model | Colour |
|-----|-------------|--------------------|------------------------|--------|
| 1 | Body | Zinc die-cast | AR10-A | White |
| | | Aluminium die-cast | AR20(K)-B to AR60(K)-B | |
| 2 | Bonnet | Polyacetal | AR10-A | White |
| | | | AR20(K)-B to AR40(K)-B | |
| | | Aluminium die-cast | AR50(K)-B/AR60(K)-B | |

Replacement Parts

[AR10-A]

| No. | Description | Material | Part no. |
|-----|----------------------|------------|-------------|
| 3 | Valve | HNBR | AR10P-090S |
| 4 | Piston assembly | Polyacetal | AR10P-150AS |
| 5 | Valve guide assembly | Polyacetal | 131329 |

[AR20(K)-B to AR60(K)-B]

| No. | Description | Material | Part no. | |
|-----|-------------------------|-----------------|--------------|-------------|
| | | | AR50(K)-B | AR60(K)-B |
| 3 | Valve | Brass, HNBR | AR50P-410S | AR60P-410S |
| 4 | Diaphragm assembly | Weatherable NBR | AR50P-150AS | |
| 5 | Valve guide assembly | Polyacetal | AR50P-050AS | AR60P-050AS |
| 6 | Check valve assembly *1 | — | AR23KP-020AS | |

*1 Check valve assembly is applicable for a regulator with backflow function (AR20K-B to AR60K-B) only.
Assembly of a check valve cover, check valve body assembly and 2 mounting screws

Additional information

| | |
|----------------------|--|
| Catalogue | AC-B-B_EU.pdf |
| Installation manuals | IM_ARx_SMV43EN.pdf |
| Operation manuals | OM_AR-B_OMS0056EN.pdf OM_ARxK-B_OMT0015EN.pdf |