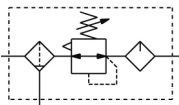


## AC20-B to AC60-B, Modular Type, Air Filter + Regulator + Lubricator AC40-F04E-B

### Datasheet

### General series information

- Filter + Regulator + Lubricator.
- Body size: 20, 25, 30, 40, 50, 55, 60.
- Port Size: 1/8, 1/4, 3/8, 1/2, 3/4, 1.
- Max. operating pressure: 1.0 MPa.
- Attachments.



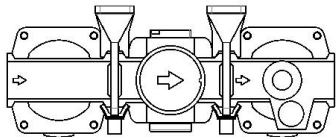
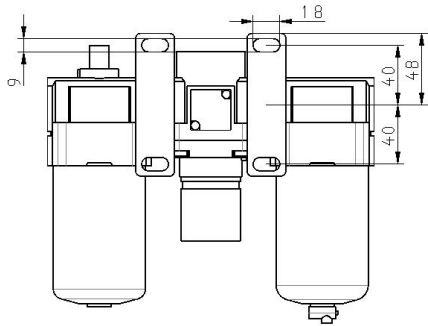
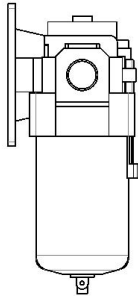
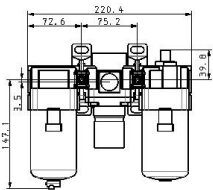
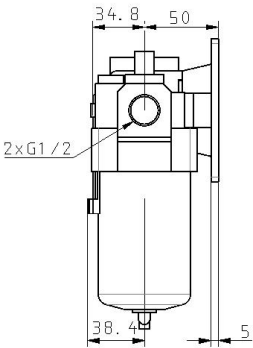
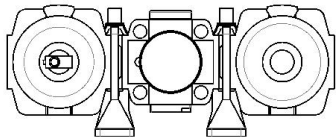
*Air combination, Air filter, regulator and  
Lubricator*

### Standard specifications

Pressure Units	Standard (Name Plate, Caution Plate for Bowl, and Pressure Gauge: MPa)
Body Size	40
Bowl Guard	Without
Drain Cock w/Barb Fitting	Without Barb Fitting
Port	04 (1/2)
Exhaust Mechanism	Relieving
Flow Direction	Standard (Flow Direction: Left->Right)
Thread	F (G)
Float type auto drain	Without Auto drain
Bowl type + Drain Cock for Lubricator	Standard (Polycarbonate Bowl + Lubricator without Drain Cock)
Set pressure	Standard (0.05 to 0.85 MPa)
Pressure gauge / Digital pressure switch	E [Square embedded type pressure gauge (with limit indicator)]
Pressure Switch	Without
Residual Pressure Relief 3 Port Valve	Without
Filter Regulator Drain Port	Standard
Check Valve	Without

T Spacer	Without
Pressure medium	Air
Maximum temperature of pressure medium	60 °C
Minimum temperature of pressure medium	-5 °C (with no freezing)
Maximum operating pressure	1.0 MPa
Proof pressure	1.5 MPa
Maximum ambient temperature	60 °C
Minimum ambient temperature	-5 °C (with no freezing)
Drain Capacity	45 cm <sup>3</sup>
Oil capacity	55 cm <sup>3</sup>
Weight	1.427 Kg

Dimensions



## Additional information

Catalogue	<a href="#">AC-B-B_EU.pdf</a>
Installation manuals	<a href="#">IM_AR-B_TF2Z394EN.pdf</a>
Operation manuals	<a href="#">OM_AR-B_OMS0056EN.pdf</a> <a href="#">OM_ARxK-B_OMT0015EN.pdf</a> <a href="#">OM_AC-B_OMT0014EN-A.pdf</a>