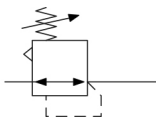


## AR20(\*)-B to AR60(\*)-B, Regulator & Regulator w/Backflow Function AR40K-F04H-B

Datasheet

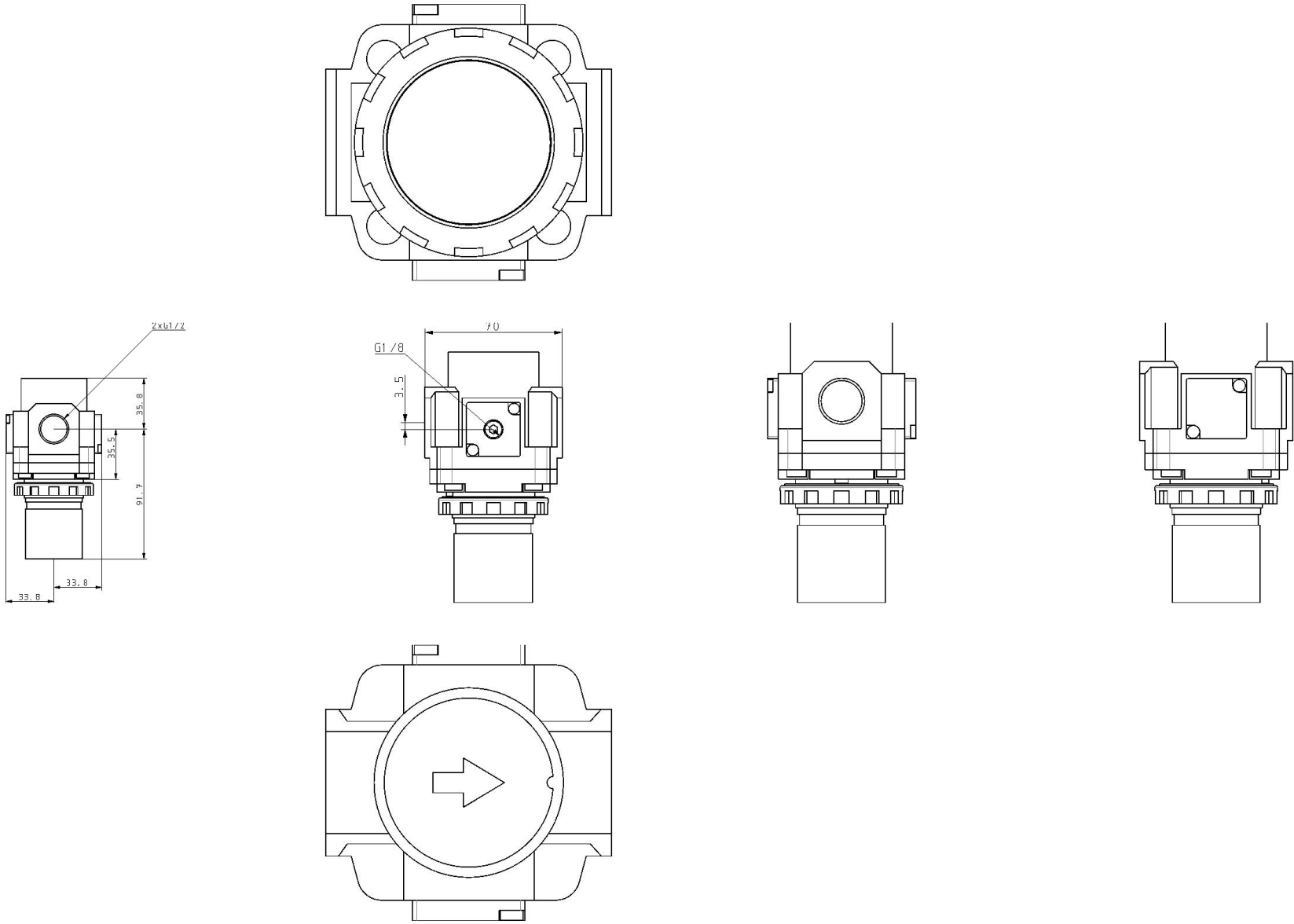


Pressure control valve, relieving pressure  
regulator, adjustable

### Standard specifications

Made to Order 1	None
Body Size	40
Backflow Function	K (w/Backflow Function)
Thread	F (G)
Port	04 (1/2)
Option	H (w/Set Nut, for Panel Mount)
Semi-standard	Standard
Made to Order 2	None
-	Air
Maximum operating pressure	1.0 MPa
Proof pressure	1.5 MPa
Weight	0.440 Kg

Dimensions



## Additional information

Catalogue	<a href="#">AC-B-B_EU.pdf</a>
Installation manuals	<a href="#">IM_ARx_SMV43EN.pdf</a>
Operation manuals	<a href="#">OM_AR-B_OMS0056EN.pdf</a> <a href="#">OM_ARxK-B_OMT0015EN.pdf</a>