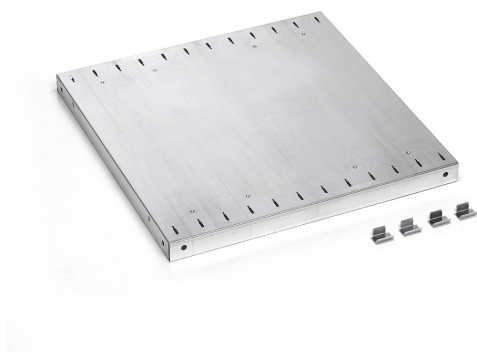


SLOTTED SHELF



The photo is used only for illustrative and non-exhaustive purpose

ART.	EAN	W [mm]	D [mm]	H [mm]	Net weight [kg]
FAC9911010099	8057711391929	484	500	35	1,8

Dimensions	Overall height [mm]	35
	Overall width [mm]	484
	Overall depth [mm]	500

Technical data	Finish	Galvanised
	Pitch [mm]	40,5
	Load capacity [kg]	120

Property	Slots	Yes
	Fixing	Included

Sales specifications	Multiple order [NR]	1
	Packaging type	Cardboard box
	Packaging width [mm]	510
	Packaging depth [mm]	510
	Packaging height [mm]	40
	Gross weight [kg]	2,2
	Cardboard weight [kg]	0,381
	Plastic weight [kg]	0,002
	Packaging volume [m ³]	0,0104

Certifications	Declaration	TÜV-GS
----------------	-------------	--------

Tolerances: dimensions ±2% | weights ±5%



INNOVATION
SINCE 1929.



FAMIS.r.l.

VIA STAZIONE ROSSANO, 13 – 36027 ROSÀ (VI) ITALY
TEL +39 0424 585455 – FAX +39 0424 585470
INFO@FAMISPA.COM

R.I. DI VICENZA, C.F. & P. IVA IT03498610249
CAPITALE SOCIALE EURO 100.000,00 INT. VERS.
CCIAA VI: R.E.A. N° 330190

Soggetta ad attività di direzione e coord. di C.I.M.M. s.p.a.

FAMI EXPORT DEPT.
TEL +39 0424 585455
FAX +39 0424 585472
EXPORT@FAMISPA.COM

WWW.FAMISPA.COM

STOREVAN
TEL +39 0424 585455
FAX +39 0424 585482
INFO@STOREVAN.IT

WWW.STOREVAN.COM