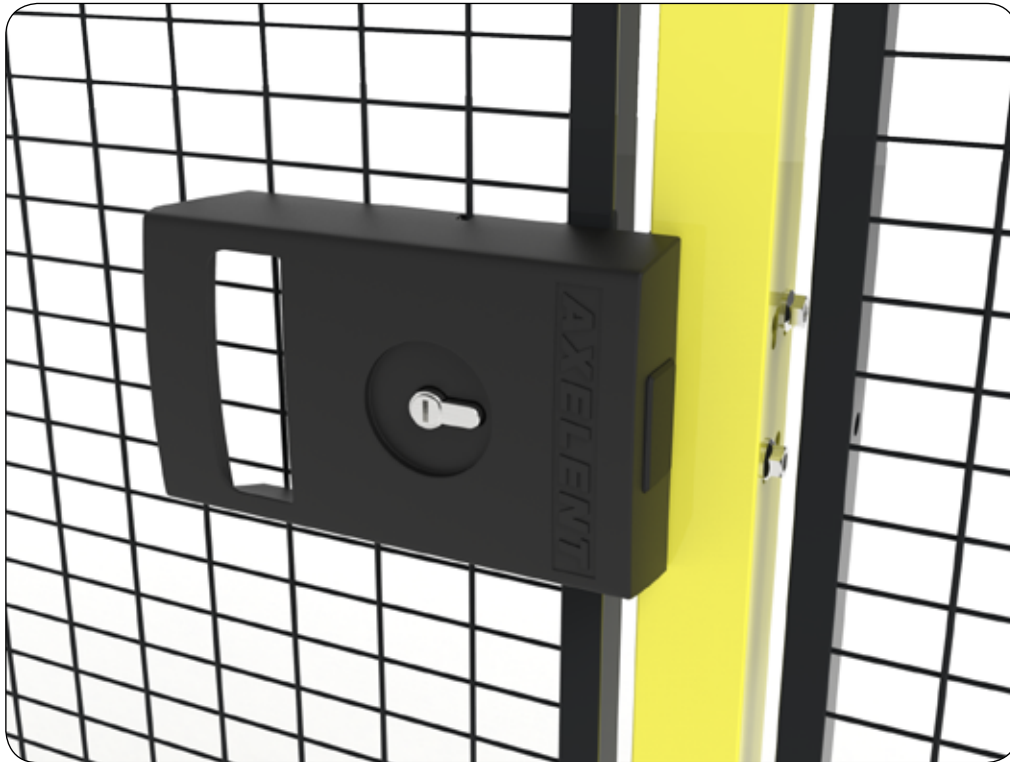


Axelent Product information

» Axelent X-It



Axelent X-It

Axelent X-It is a keyed cylinder lock designed primarily for all our modular mesh panel systems for machine guarding, industrial/warehouse and storage walls. Thanks to its simple assembly, it can also be used for similar third party products/systems on the market.

The lock is a unique design that requires no additional lock housing, just add a standard cylinder such as Euro. The lock is robust with a cover in metal to withstand tough conditions. X-It can easily be adapted for swing or sliding doors, and can be provided with an evacuation facility if required. The lock can also be combined with a mechanical panic / emergency unit.

The product is patent pending.

X-It

- Robust
 - Unique locking function
 - Expedient
 - Flexible
 - Simple assembly
 - Tested
 - Extended functions possible
 - Supplied in a specially designed box
-

Axelent

Product information

» Axelent X-It

Technical data X-Guard

Art.no.	Description
XIT-L01-101	Cylinderlock X-It, left mech, single hingedoor, X-Guard
XIT-L01-301	Cylinderlock X-It, left mech, single slidingdoor, X-Guard
XIT-L01-401	Cylinderlock X-It, left mech, slidingdoor with centrelock, X-Guard
XIT-R01-101	Cylinderlock X-It, right mech, single hingedoor, X-Guard
XIT-R01-301	Cylinderlock X-It, right mech, single slidingdoor, X-Guard
XIT-R01-401	Cylinderlock X-It, right mech, slidingdoor with centrelock, X-Guard
XIT-L02-101	Cylinderlock X-It, left mech+panic, single hingedoor, X-Guard
XIT-R02-101	Cylinderlock X-It, right mech+panic, single hingedoor, X-Guard

Technical data X-Store

Art.no.	Description
XIT-L01-102	Cylinderlock X-It, left mech, single hingedoor, X-Store
XIT-L01-202	Cylinderlock X-It, left mech, double hingedoor, X-Store
XIT-L01-302	Cylinderlock X-It, left mech, single slidingdoor, X-Store
XIT-L01-402	Cylinderlock X-It, left mech, slidingdoor with centrelock, X-Store
XIT-R01-102	Cylinderlock X-It, right mech, single hingedoor, X-Store
XIT-R01-202	Cylinderlock X-It, right mech, double hingedoor, X-Store
XIT-R01-302	Cylinderlock X-It, right mech, single slidingdoor, X-Store
XIT-R01-402	Cylinderlock X-It, right mech, slidingdoor with centrelock, X-Store
XIT-L02-102	Cylinderlock X-It, left mech+panic, single hingedoor, X-Store
XIT-L02-202	Cylinderlock X-It, left mech+panic, double hingedoor, X-Store
XIT-R02-102	Cylinderlock X-It, right mech+panic, single hingedoor, X-Store
XIT-R02-202	Cylinderlock X-It, right mech+panic, double hingedoor, X-Store

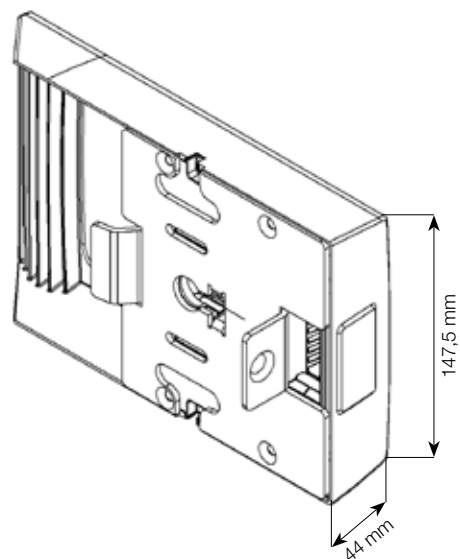
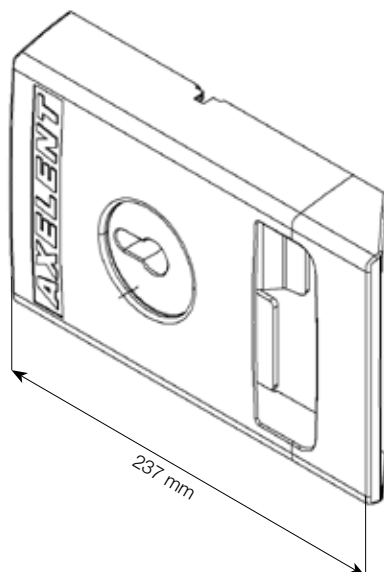
Technical data Storeroom walls

Art.no.	Description
XIT-L01-103	Cylinderlock X-It, left mech, single hingedoor, System F
XIT-L01-104	Cylinderlock X-It, left mech, single hingedoor, System FK
XIT-R01-103	Cylinderlock X-It, right mech, single hingedoor, System F
XIT-R01-104	Cylinderlock X-It, right mech, single hingedoor, System FK

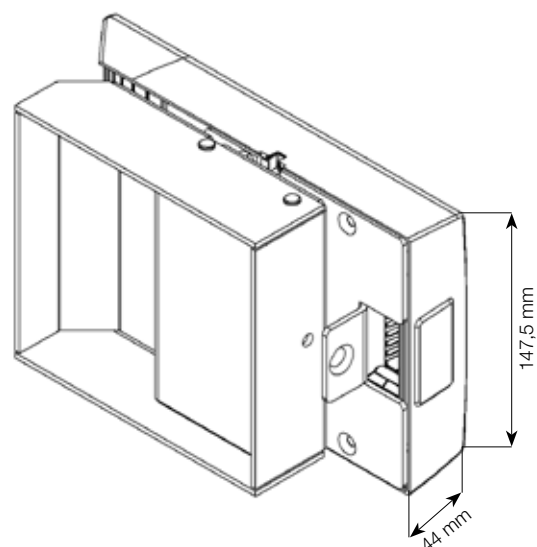
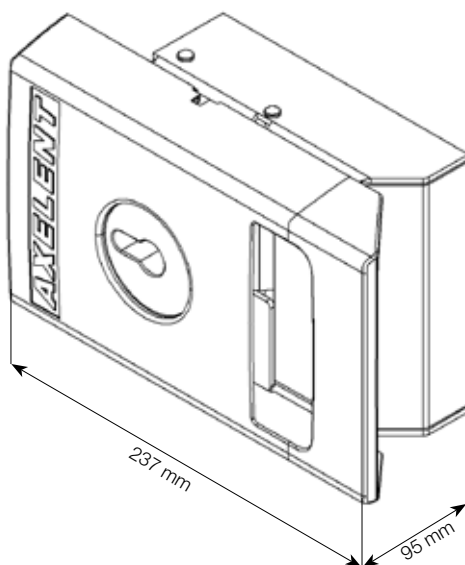
Axelent Product information

» Axelent X-It

Axelent X-It Cylinder



Axelent X-It Cylinder with panicfunction



Axelent X-It Eurocylinder Whole (Both sides) / Half (One side)

